

Mukilteo Police Department 2010 Annual Report



Table of Contents

Table of Contents page 2
2010 Annual Report page 3

Attachments

Police Department organization chartA-1
2010 Goals and ObjectivesA-2
Dispatched Call SummaryA-3
Support Services Activity ComparisonA-4
Citations, Infractions and Jail BookingsA-5
2010 Employee Training Hours Report A-6
City of Mukilteo Uniform Crime Reports..... A-7
Washington State Uniform Crime Reports..... A-8



The Mukilteo Police Department is a full service police agency. It provides services to approximately 20,000 citizens in a six square mile area 24-hours a day, 365 days a year. The department is made up of five divisions: Support Services, Patrol, Special Operations (Detectives,) Crime Prevention, and Training. The Support Services Division includes Command Staff, Records, Evidence, the Quartermaster, and Animal Control. The Patrol Division is the "backbone" of a police department. Its fundamental responsibilities include handling all emergencies, daily service calls and ensuring public safety. Traffic enforcement is a function within the Patrol Division. Two officers serve as specialized traffic officers, who also perform normal traffic duties. Special Operations is the investigative arm of the department. They conduct criminal and background investigations as well as work with other police intelligence units and regional task forces. The mission of the Crime Prevention Division is to develop, implement, coordinate and evaluate departmental crime prevention efforts. These efforts are aimed at protecting the citizens of Mukilteo from victimization by anticipating, recognizing and assessing the crime risk opportunity and initiating appropriate action to eliminate or reduce the opportunity for crime to occur. The Training Division ensures that all employees of the Police Department receive mandatory and supplemental training. The Training Division also maintains officers' training records and certifications, participates in the hiring process, and facilitates the Field Training Program for newly hired officers. There are 32 employees in the Police Department comprised of 28 commissioned and 4 civilian personnel.

The Organizational Chart for the Police Department is attached as ^{A-1}.

GOALS AND OBJECTIVES

The 2010 Police Department goals and objectives as well as progress in attaining them are outlined in attachment ^{A-2}.

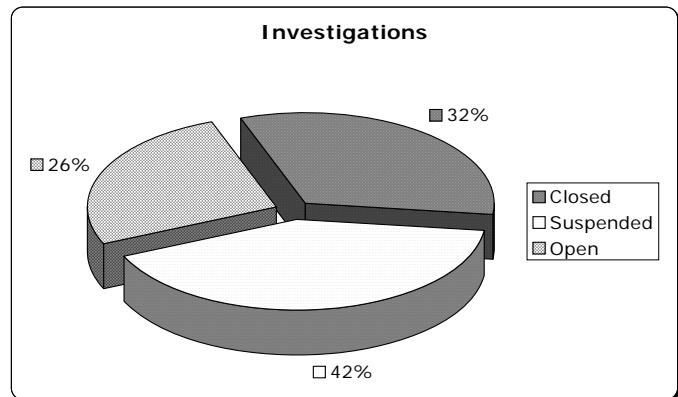
PATROL DIVISION

The total calls for service handled by the Police Department in 2010 decreased slightly from 2009. Those numbers were 12,511 and 12,775 calls respectively,

which is roughly a 2% decrease. A chart of all dispatched calls from 2008 through 2010 is attached as ^{A-3}.

SPECIAL OPERATIONS DIVISION

During 2010 the Special Operations Division had an authorized staffing of two Detectives dedicated to investigations and one Sergeant providing 1st level supervision. The Sergeant also reviews all case reports prepared within the Department in order to prioritize and investigate criminal activity.



Some notable cases handled by the Special Operations Division in 2010 include:

- Arrest of a 24 year old male who had assaulted a police officer. The subsequent investigation led to the seizure of individual packages of cocaine (33 grams total), individual packages of Oxycontin Pills (1400 total pills), \$43,641 in U.S. Currency and numerous firearms.
- Arson investigation of a local church with a 3 million dollar loss that is still ongoing.
- Joint investigation with the FBI which uncovered over 50 pounds of stolen jewelry from local residents and the closure of several unsolved burglary cases.

Sixty-three cases were still being worked on in investigations that had been held over from 2009. 159 cases were assigned out for investigation during 2010. Of the total 222 cases worked on in 2010, 72 were closed by either arrest, referral to prosecution, or due to extenuating circumstances such as victims failing to cooperate or the reported crime did not occur. 92 cases were placed in a suspended status with no additional leads to follow, and 58 cases were held over for further investigation in 2010.



TRAFFIC

Traffic Unit accomplishments for 2010

- Awarded electronic ticketing grant from the Washington Association of Sheriffs and Police Chiefs that provided 10 BARS code scanners and 10 mobile printers for traffic enforcement.
- Over \$10,000 in State Equipment grants received from the Washington State Traffic Safety Council.
- Safely drove over 10,000 miles conducting traffic emphasis patrols via motorcycle, unmarked car and undercover SUV.
- Performed several major collision investigations including one fatal truck verses pedestrian collision, a 2nd pedestrian vehicle accident that resulted in serious injuries, and a serious head on collision involving a DUI/drug impaired driver.

COMMUNITY SERVICE OFFICER

The Mukilteo Police Department has one Community Service Officer. This position performs animal control, parking enforcement, and provides assistance to the Support Services Division. The Community Service Officer is a civilian position reporting to the Commander.

ANIMAL CONTROL

In 2010 the Community Service Officer saw a slight increase in the number of wild animal complaints. This increase was primarily related to coyote and raccoon incidents. There were no reports of citizens being bitten by a coyote or raccoon; they were simply nuisance complaints.

The City of Mukilteo contracts with the Progressive Animal Welfare Society (PAWS) to provide sheltering services. The shelter statistics from PAWS showed a slight decrease in the incoming number of animals from our city.

The disposition of impounded animals through the PAWS shelter is detailed in the following chart:

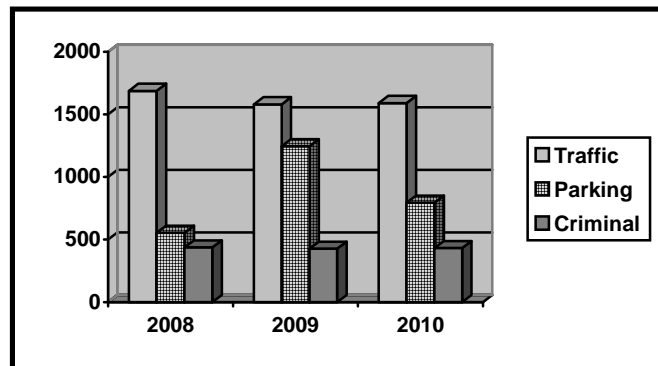


10500 47 Pl W, Mukilteo, WA 98275

	2008		2009		2010	
	Dogs	Cats	Dogs	Cats	Dogs	Cats
Returned to owner	24	2	31	6	21	26
Transferred or adopted	13	59	19	26	18	5
Euthanized	1	21	6	12	3	6
Total	38	82	56	44	42	38

COMMUNITY SERVICE/SUPPORT SERVICES

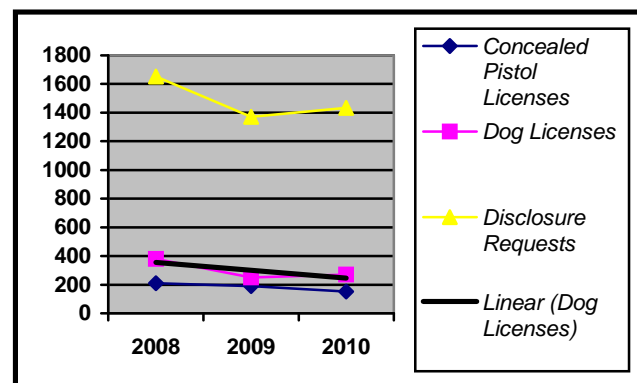
In 2010 the Community Services Officer transported narcotics to the Washington State Patrol Crime laboratory for analysis and handled numerous found property calls. The Community Service Officer also provided extra support for the front office staff.



SUPPORT SERVICES DIVISION

In 2010 the Support Services Division continued its maintenance of the Evidence Room by preparing for a clean up and disposal of evidence from completed cases through Stericycle; TruRecycle.com; a Drug Burn in coordination with Kimberly-Clarke; and, beginning preparations for another auction through Property room.com to take place in early 2011.

The Support Services Division has not seen a significant increase in the volume of Traffic or Criminal tickets (see table). The division processed nearly \$400,000 in fines and bail forfeitures during 2010. This is then distributed to different funds within the state and county. This is the fourth in a row where the Division processed over \$300,000 in this area.



In 2010 the Support Services Division completed a State Audit, issued



concealed pistol licenses and processed public disclosure requests.

A Support Services Activity Comparison Report is attached as ^{A-4}.

CRIME PREVENTION DIVISION

2010 saw continued success in the expansion of key programs such as the Volunteers in Public Safety (VIPS). The Crime Prevention Division also took on several additional duties such as Code compliance, Department Historian, and Information Technology support. Program accomplishments include: two Citizens Academy classes, Neighborhood Block Watch expansion, continued Crime Trend Analysis, False Alarm Reduction Program, Recruiting, Public Information Officer and media liaison, and other various public relations and community outreach programs.

CITIZENS ACADEMY

The purpose of the Mukilteo Police Citizens Academy is to provide the citizens and business community with a better understanding of the day-to-day operations of the police department. The eight week course provided information about the various divisions in the Department in addition to criminal law & procedures, officer safety, police equipment, hiring and recruiting, and investigations. Students are also provided with the opportunity to ride along with a patrol officer for part of a shift.

In 2010, the Department hosted two classes. The spring class graduated 21 students. The fall class graduated 23 students. The total cost for both academies was just under \$2,000. Feedback from both classes was very positive and all attendees commented on their improved appreciation for what the Mukilteo Police Department does everyday for the community.

2011 has two Citizens' Academies scheduled. The first session will begin March, 2011 and the second session is scheduled to begin September, 2011.

NATIONAL NIGHT OUT AGAINST CRIME

National Night Out (NNO) is a program which partners local law enforcement agencies with their communities in an effort to heighten crime and drug prevention awareness while generating support for local anticrime efforts.



This year the Police Department partnered with numerous local business and community groups to create a very successful event with over 2000 people attending. A substantial amount of planning for this event began in January through the entire year until the event date. Our last NNO was held in 2008 with an estimated 800 people in attendance. NNO 2009 was cancelled due to budgetary constraints. NNO 2011 is scheduled for Aug 2nd.

NEIGHBORHOOD BLOCK WATCH

The Neighborhood Block Watch program is a partnership between residents that includes law enforcement to improve safety and prevent crime. Neighborhoods are encouraged to gain some familiarity with each other and to understand what constitutes reportable suspicious activity. Active Block Watch groups not only serve as the eyes and ears of the police department, but they also are able to identify and correct potential "crime hazards". Crime hazards are unsafe conditions and specific locations that can possibly harbor criminal activity. Neighborhoods that decide to form formal Block Watch groups are visited by the Crime Prevention Officer who presents program information and establishes liaisons (Block Captains) for the neighborhood. Pertinent crime bulletins and burglary reports are distributed to Block Watch Captains. Block Watch signs are posted in neighborhoods and decals are provided for homeowners.

The Department added 4 block watch groups expanding to **13** neighborhood block watch groups. The costs associated with the Block Watch program have been minimal, requiring only the printing of brochures and the purchase of window decals and street signs. One street sign is provided by the Police Department and additional signs are at the expense of the block watch group.

CRIME PREVENTION THROUGH ENVIRONMENTAL DESIGN (CPTED) SURVEYS

The Crime Prevention Division offers free CPTED security surveys for Mukilteo businesses and homeowners. This survey details current security programs and provides recommendations with regard to their physical security situation and environmental considerations such as lighting, plantings, space, etc. **10** CPTED surveys were conducted this year for businesses, homeowners, and various



areas in the City. This is a 100 percent increase in surveys conducted since 2009.

CRIME TREND ANALYSIS

All Burglaries, Vehicle Thefts and Vehicle Prowls are tracked to establish and determine crime trends. Each month, a burglary report and burglary map is generated and is distributed to the Special Operations Division. Every quarter the burglary map is distributed to the entire Police Department. Several possible trends were identified throughout the course of the year and were relayed to the Special Operations Division. Informational bulletins were distributed to the Block Watch Captains and the Mukilteo Beacon when a crime trend was noted.

The Crime Prevention Division also assists with repeated 911 hang up calls from businesses. At this time, there is no ordinance to support enforcement action for repeat offenders. The Crime Prevention Officer will perform an analysis and site visit whenever there is a business with numerous 911 hang-up calls. This year two businesses were contacted. The first was able to fix the problem which was a software issue related to the telephone company. The second business has indicated that their repeated 911 hang up calls stem from clients attempting to make international calls or accidentally hitting the emergency button on the room phones.

FALSE ALARM REDUCTION PROGRAM

Residential and business alarm systems are great deterrents and tools available to lessen the likelihood of becoming the victim of a burglary. An unfortunate byproduct of alarm systems are "false alarms" that police are frequently dispatched to. False alarms incidents place a drain on police manpower and officer availability for other valid and even emergency incidents. This program, created in 2008, is aimed at ensuring the homeowner/business owner is made aware of recurring false alarm incidents and that corrective action is taken to decrease and eliminate the number of false alarm activations.

The Mukilteo Police Department Crime Prevention Unit is responsible for monitoring and tracking the number of false alarm incidents in the city. Mukilteo



Municipal Code 5.28.050 allows the assessment of monetary penalties for frequent false alarm offenders.

The overall goal of this program is to identify repeat false alarm offenders and provide the appropriate education and training necessary to eliminate future false alarm events. The overall success of this program ensures the adequate availability of police officers for valid emergency events.

Businesses and residences that have two false alarm responses within a 6 month period receive a warning letter from the Crime Prevention Officer which states they are in violation of the Municipal Code and to coordinate corrective efforts with their alarm company and the Crime Prevention Officer. **59** formal warning notices were sent to homeowners and businesses throughout the City. Offenders with three or more false alarm responses within a 6 month period are issued a Notice of Infraction. **15** infractions were issued in 2010.

Year	# of False Alarms	# of Warning Letters	# of Infractions
2008	739	16 (note 1)	N/A
2009	732	44	16 (note 2)
2010	656	59	15

*Note 1: The False Alarm Reduction Program was operational for part of the calendar year

*Note 2: The Crime Prevention Division began issuing infractions in October 2009.

VOLUNTEERS IN PUBLIC SAFETY

The Volunteers in Public Safety (VIPS) program provides the Department with the use of volunteers who have particular skills, desires and experience while encouraging police-citizen partnerships consistent with the values and goals of our community policing philosophy.

The program was postponed in 2009 due to budgetary restrictions. The program was fully funded and implemented this year.

Five “core” members of the VIPS program were screened and began training this year. The training was comprised of administrative indoctrination, policy & procedures, radio use, radar reader board training, and vacation house checks. Two of the volunteers are bi-lingual (Russian and Korean language) and have assisted patrol and investigations with cases.



Uniforms consisting of polo shirts, jackets, and ball caps were designed and each member will be issued sometime in 2011.

Five additional members have been identified and training will begin for them at the beginning of 2011. All volunteers are recruited from the Citizens Academy classes.

COMMUNITY OUTREACH

Requests for general and specific topic presentations have been fairly consistent from business, community and residential groups. A total of **24** separate presentations were provided by the Crime Prevention Officer in 2010. Topics ranged from drugs and alcohol, general safety, home protection, and police facility tours.

The Police Department is continuing its partnership with the Mukilteo School District's Drug & Alcohol forum which establishes prevention programs and presentations for parents and students. The Crime Prevention Officer serves on the Advisory Council for the Mukilteo School District's Career and Technical Education (CTE) program.

The Crime Prevention Officer is also an advisory board member for the Snohomish County Business Watch. The mission of the Snohomish County Business watch is similar to a neighborhood block watch with businesses sharing pertinent crime prevention tips and information. The group has grown and is looking at expanding to include more business groups from the north part of Snohomish County. Mukilteo hosted a general membership meeting this summer at the Staybridge Suites.

Several crime prevention articles were submitted to local news outlets such as the Everett Herald, Mukilteo Beacon, Mukilteo Tribune, and the City Views Newsletter in addition to reaching out to the Seattle television outlets for holiday safety and vehicle prowling awareness efforts.

PUBLIC INFORMATION OFFICER

The Crime Prevention Officer took on the role as the Department's Public Information Officer (PIO) in 2009. Duties include, but are not limited to:



performing the redaction of the Sergeant's patrol logs to create an official "press log" which is distributed to local media. **15** press releases and media updates were created and distributed this year for major incidents and noteworthy events. As the PIO, the Crime Prevention Officer serves as the media liaison for the Police Department and the Department's information liaison to the community.

To aid in recruiting, public information, and crime prevention efforts, a Department Facebook and Twitter page were created late in 2009. The Facebook page has drawn 104 "fans" by word of mouth efforts with no advertising costs. The Twitter page has not drawn as many followers.

The Crime Prevention Officer has also taken on a "webmaster" role for the Police Department's homepage on the City of Mukilteo website. Numerous updates have been made to the format and content for the Department page to improve every citizen's ability to answer many of their questions and concerns, and obtaining additional information about their police department.

RECRUITING

In preparation for a possible annexation, the Crime Prevention Officer took on additional duties to serve as the Department's recruiting officer. The Department was at full-staffing for 2010 and no recruiting events were attended and no oral boards were held.

Entry level candidate scores are received from Public Safety Testing and the Crime Prevention Officer continues to process all of these scores, providing all candidates with an initial response to their applications in a timely manner. The same is being done with lateral officer applications. There are currently 392 active entry-level scores and 10 lateral-entry application on hand.

SPECIAL PROJECTS

The following special projects and programs involved the coordination and participation of the Crime Prevention Officer with outside agencies:

CHIEF FOR A DAY: The Mukilteo Police Department was proud to sponsor Alex Eanes as its honorary Chief for a Day in 2010. The Chief for a Day program



allows children with a life threatening medical condition to live out their dreams by becoming the honorary Police Chief or Sheriff of their sponsoring jurisdiction. The next CFAD event is scheduled to take place in 2012.

CODE COMPLIANCE: The Crime Prevention Division has taken on the duty of enforcing business licenses for the City. The Finance Department forwards a list of businesses that have not complied with their business licensing requirements (after several warnings). The Crime Prevention Division then performs a follow up visit to these businesses, with a high success rate of the businesses paying their late fees and business license costs. Those who do not comply are issued a notice of infraction under the City business licensing municipal code.

DEPARTMENT HISTORIAN: Created a timeline of the Department based upon City records. This will be an ongoing project to recreate as much of the Department's history based upon personal recollection, Department and City records, photographs, news articles, etc. News articles and noteworthy stories that pertain to the Police Department are being scrapbooked as well.

INFORMATION TECHNOLOGY: Assist with routine help desk calls for PC support as needed.

KOREAN LANGUAGE ASSISTANCE: Provided translation and cultural assistance to patrol and investigations with several case reports and follow-up investigations.

SHOP WITH A COP: The Shop with a Cop program teams up needy children from the area with a law enforcement officer to go shopping for Christmas gifts. Thanks to a sizable donation from Travis Industries, the Mukilteo Police Department hosted its own event Dec 21st. The Police Department teamed up with firefighters from the Mukilteo Fire Department to take 16 children Christmas shopping.

TRAINING

The year end "2010 Employee Training Hours Report" for the Department is attached as A-6.



10500 47 Pl W, Mukilteo, WA 98275

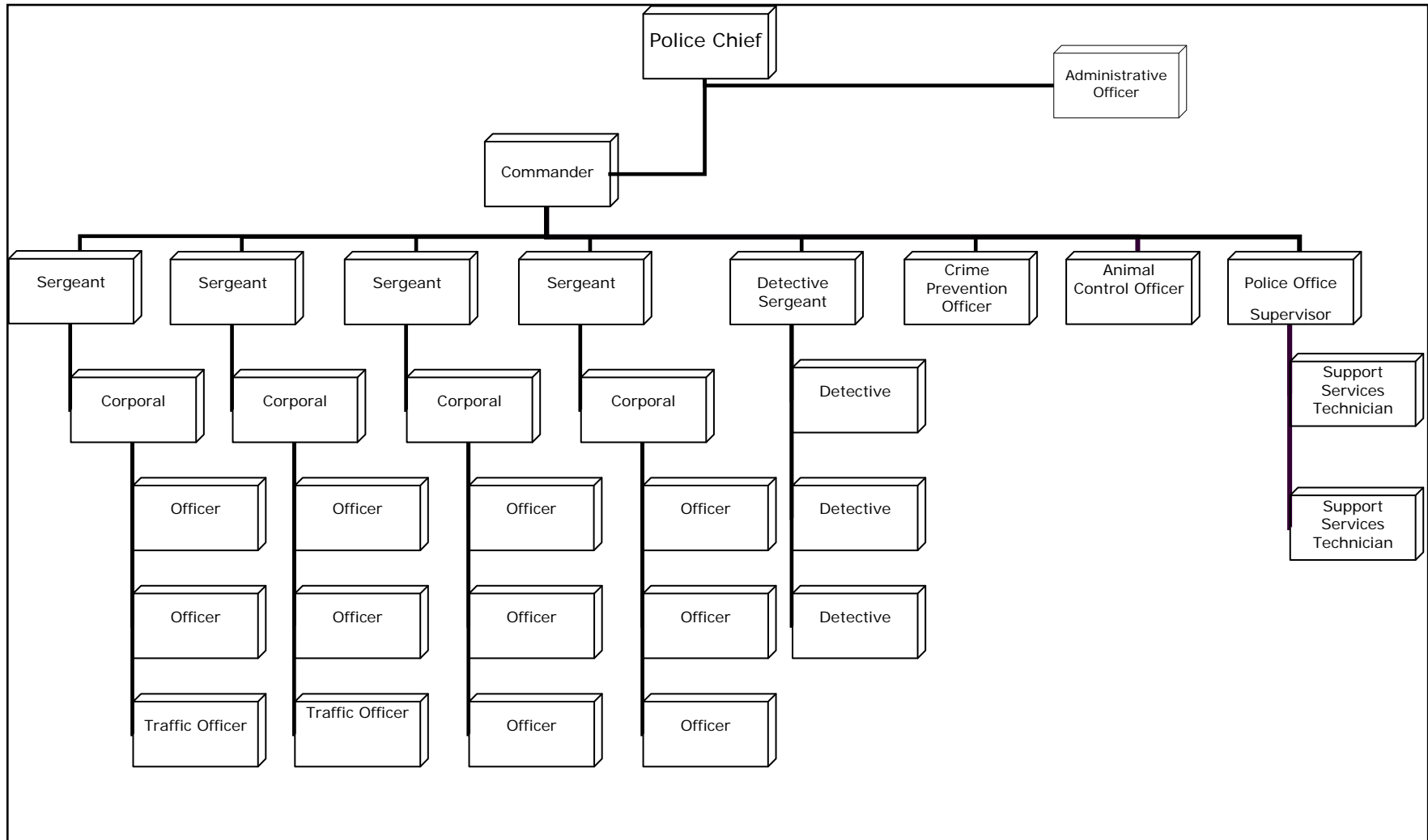
UNIFORM CRIME REPORTS

Analysis of the City of Mukilteo Uniform Crime Reports shows a 4% decline in overall reported crime. This includes a significant percentage decrease in Forcible Rape (-50%,) Robbery (-50%,) and Aggravated Assault (-24%,) The only significant increases in crime are related to Simple Assault (+14%,) and Motor Vehicle Theft (+36%,) The Department is working with the Domestic Violence Services of Snohomish County, our City Prosecutor, and the Courts to ensure that the increase in Simple Assaults is being adequately addressed. The Department is also working with the Snohomish County Auto Theft Task Force to ensure the increase in Motor Vehicle Thefts is properly attended to. The Uniform Crime Reports specific to the City of Mukilteo are attached to this report as ^{A-7}. The most recently available (2009) Washington State Uniform Crime Reports are attached as ^{A-8}.



10500 47 Pl W, Mukilteo, WA 98275

Organizational Chart





2010 Police Department Annual Goals/Objectives

Following are the 2010 Annual Goals and Objectives, and progress towards attaining them.

Administration & Support Services

1. Complete a comprehensive property & evidence room manual
** Not completed; continued until full implementation of New World CAD/RMS system is achieved*
2. Cross-Train all records personnel
** On-going process*
3. Planning in preparation of CAD/RMS software
** On-going process*
4. Stay within budget
** Completed*

Crime Prevention

1. Establish a Police Volunteer Program
** total of 210 volunteer hours during the year*
2. Reestablish National Night-Out Against Crime Event
** Accomplished*
3. Conduct at least one Citizens' Police Academy
** Accomplished*
4. Help establish new Block Watch groups
** Accomplished (13 Block Watch groups total)*
5. Stay within budget
** Accomplished*

Patrol

1. Maintain minimum deployment of three patrol officers per shift
** Accomplished*
2. Train one additional officer in advanced traffic procedures
** Accomplished*
3. Stay within budget
** Completed*



10500 47 Pl W, Mukilteo, WA 98275

Special Operations

1. Continue participation in Regional Police Intelligence (RIG) Group
** Accomplished*
2. Coordinate with the Crime Prevention Division on crime trend analysis
** Completed (monthly crime trend analysis reports were forwarded to the Special Operations Division)*
3. Stay within budget
** Completed*

Training

1. Assure minimum required training hours are met
** State and Department required training hours met by all patrol officers*
2. Meet standards for safety training requirements
** As a group the commissioned officers had a 84% success rate in meeting safety training standards*
3. Stay within budget
** Completed*

CITY OF MUKILTEO

DISPATCHED CALL SUMMARY

Dispatched Call Type	Year	Jan	Feb	Mar	Apr	May	Jun	Jul	Aug	Sep	Oct	Nov	Dec	Total
911 Hang Up Calls	2008	38	45	30	29	55	28	39	38	39	47	37	36	461
	2009	52	42	38	39	47	48	35	38	30	42	44	38	493
	2010	34	54	45	44	40	39	54	60	48	42	44	37	553
Abandoned Vehicles	2008	3	4	5	5	12	8	20	10	8	4	5	6	90
	2009	9	4	5	10	13	11	7	10	4	7	8	7	95
	2010	4	10	4	9	2	8	9	12	7	4	2	11	82
Accident - Injury	2008	2	2	4	6	3	5	4	8	4	1	5	3	47
	2009	10	6	11	13	4	1	8	15	9	4	7	2	90
	2010	2	4	1	2	4	5	4	15	0	7	1	3	48
Accident - Non Injury	2008	28	21	18	33	27	29	31	35	36	37	31	25	368
	2009	28	24	19	19	24	24	30	18	20	30	32	25	293
	2010	19	25	19	19	22	28	33	18	29	38	35	39	324
Alarm - Non Priority	2008	79	54	45	48	82	53	114	84	65	73	54	64	815
	2009	72	51	60	75	35	32	84	68	59	63	52	47	698
	2010	64	48	72	65	77	79	86	58	58	62	79	43	791
Alarm - Priority	2008	1	2	1	1	4	3	1	1	0	0	1	1	16
	2009	4	1	1	1	2	8	4	2	2	4	3	0	32
	2010	1	2	1	1	4	3	1	1	0	0	1	1	16
Animal Complaint	2008	28	29	23	22	51	41	48	48	47	49	42	45	473
	2009	34	24	30	29	47	52	48	40	48	35	29	26	442
	2010	28	32	46	27	23	30	51	44	50	20	41	22	414
Arson	2008	0	0	0	0	1	1	1	0	0	0	1	0	4
	2009	0	0	1	0	0	0	1	1	1	2	2	0	8
	2010	1	0	1	1	0	0	0	1	0	0	0	0	4
Assault	2008	3	6	2	6	13	7	11	9	6	10	8	13	94
	2009	5	1	4	4	9	7	7	11	5	2	1	5	61
	2010	4	2	1	5	5	2	6	7	2	6	11	10	61
Assist Other Agency	2008	6	17	6	5	10	10	8	11	12	8	9	7	107
	2009	11	17	14	17	20	18	23	13	11	15	8	7	174
	2010	6	6	5	5	8	10	5	9	18	12	5	3	92
Attempt to Locate / Contact	2008	2	1	0	0	0	0	1	0	0	2	0	4	10
	2009	4	3	4	6	7	6	8	7	8	5	3	5	66
	2010	9	5	5	5	5	5	8	5	3	2	5	5	62

Dispatched Call Type	Year	Jan	Feb	Mar	Apr	May	Jun	Jul	Aug	Sep	Oct	Nov	Dec	Total
Bomb	2008	0	0	0	0	0	0	0	0	0	0	0	0	0
	2009	0	0	0	0	1	0	0	0	0	0	0	0	1
	2010	0	0	0	0	0	0	0	0	0	0	0	0	0
Burglary	2008	9	14	18	6	6	19	17	15	13	5	12	3	137
	2009	6	10	9	9	14	14	13	8	13	14	9	17	136
	2010	14	5	7	8	15	14	14	8	13	10	12	12	132
Child Abuse	2008	0	0	0	0	0	0	0	0	1	0	1	0	2
	2009	0	0	1	1	0	2	3	0	2	2	0	0	11
	2010	0	1	0	1	2	1	1	1	0	0	0	0	7
Child Crime-not abuse	2008	0	4	0	0	1	1	1	1	0	4	0	1	13
	2009	0	0	0	3	7	4	1	1	5	4	1	1	27
	2010	2	1	3	2	4	4	2	3	1	1	2	1	26
Civil Problem	2008	9	13	15	15	17	20	20	16	11	7	11	11	165
	2009	10	16	12	18	9	16	21	16	21	13	10	9	171
	2010	10	10	17	17	18	10	18	16	27	5	6	5	159
CPS Complaint	2008	0	0	0	1	1	0	0	0	1	1	1	1	6
	2009	0	2	1	1	5	3	1	0	1	1	2	0	17
	2010	1	1	1	2	1	1	1	0	0	1	0	1	10
Death	2008	1	1	0	0	0	1	0	0	0	3	2	1	9
	2009	2	0	1	3	0	0	0	0	1	2	1	0	10
	2010	1	0	0	1	0	2	1	2	0	0	1	0	8
Disturbance	2008	8	11	16	11	12	11	14	12	12	14	11	19	151
	2009	10	14	15	11	13	11	13	10	12	7	10	3	129
	2010	12	15	10	6	16	17	18	17	12	11	7	7	147
Domestic Violence	2008	16	14	11	18	14	16	27	17	20	15	8	19	195
	2009	17	17	20	9	17	16	14	21	18	21	22	21	213
	2010	29	25	24	25	20	21	23	37	25	21	22	8	280
DUI	2008	13	10	10	13	12	16	11	14	13	11	11	7	141
	2009	17	11	11	13	18	12	17	10	11	11	17	14	162
	2010	9	13	11	17	21	17	21	12	14	15	12	16	178
Dumping	2008	0	0	3	1	1	0	0	1	3	0	2	2	13
	2009	0	1	1	0	0	2	2	0	1	1	0	1	9
	2010	1	4	1	0	2	3	2	0	2	1	0	0	16

Dispatched Call Type	Year	Jan	Feb	Mar	Apr	May	Jun	Jul	Aug	Sep	Oct	Nov	Dec	Total
Escort	2008	0	0	0	0	0	0	0	0	0	0	0	0	0
	2009	0	0	0	0	0	0	0	0	0	0	0	0	0
	2010	0	0	0	0	0	0	0	0	0	0	0	0	0
Fireworks	2008	2	0	1	1	0	1	0	0	0	0	0	0	5
	2009	7	0	1	1	1	1	66	4	1	0	0	2	84
	2010	0	0	0	0	2	5	29	1	3	0	0	0	40
Follow Up Calls	2008	77	62	41	53	46	69	35	51	73	51	55	51	664
	2009	69	64	52	83	98	114	48	75	60	70	72	73	878
	2010	53	49	102	70	66	75	56	64	74	64	71	65	809
Foot Patrol	2008	3	2	4	0	0	0	0	4	0	0	0	0	13
	2009	10	4	4	2	5	4	0	0	3	4	6	7	49
	2010	1	6	4	9	4	9	8	4	0	1	1	1	48
Fraud	2008	5	4	8	5	5	5	6	10	3	3	8	5	67
	2009	10	11	11	10	7	9	8	4	3	6	7	8	94
	2010	6	5	5	8	2	5	2	6	4	9	3	4	59
Harassment	2008	10	5	7	9	7	3	2	2	9	9	6	9	78
	2009	5	1	2	3	5	8	5	8	3	3	5	3	51
	2010	10	4	4	12	6	4	5	5	6	4	2	2	64
House/Business Check	2008	1	3	1	0	1	3	2	1	0	2	0	0	14
	2009	0	2	1	0	0	1	4	0	1	3	2	0	14
	2010	4	2	1	0	0	0	1	0	5	4	1	0	18
Information	2008	29	16	11	17	9	10	14	6	16	13	10	9	160
	2009	15	14	10	6	6	12	6	8	13	6	3	9	108
	2010	3	5	4	10	6	13	11	11	12	10	15	11	111
Juvenile Problems	2008	31	27	36	29	46	31	40	35	34	35	21	30	395
	2009	14	27	23	34	50	47	29	25	23	25	16	19	332
	2010	14	17	14	21	23	27	24	22	27	17	22	17	245
Kidnapping	2008	0	0	0	0	0	0	0	0	0	0	0	0	0
	2009	0	0	0	0	0	0	0	0	0	0	0	0	0
	2010	0	0	0	0	0	0	0	0	0	0	0	0	0
Liquor Violations	2008	0	1	0	0	3	2	2	1	3	2	0	0	14
	2009	0	0	1	2	0	2	2	1	1	1	1	0	11
	2010	0	0	0	1	1	2	1	0	1	2	0	0	8

Dispatched Call Type	Year	Jan	Feb	Mar	Apr	May	Jun	Jul	Aug	Sep	Oct	Nov	Dec	Total
Mal Mischief - Non Prior	2008	11	10	10	13	13	15	15	15	10	11	13	8	144
	2009	3	4	7	12	11	7	15	9	13	8	6	10	105
	2010	11	3	15	15	8	5	17	15	19	11	12	12	143
Mal Mischief - Priority	2008	3	2	1	2	3	2	6	2	2	2	2	2	29
	2009	1	1	3	1	4	2	5	3	1	3	9	2	26
	2010	0	2	3	1	1	1	1	3	1	2	1	0	16
Noise	2008	13	10	6	8	13	11	16	40	27	17	15	19	195
	2009	20	16	14	26	21	19	38	26	21	11	8	6	226
	2010	8	7	14	7	14	15	25	33	18	15	6	8	170
Non-Law Agency Asst	2008	11	8	9	10	2	6	9	5	5	9	4	7	85
	2009	11	1	10	18	10	15	14	10	2	1	8	19	119
	2010	13	8	5	8	0	10	8	11	4	5	1	0	73
No Parking	2008	19	17	20	21	21	29	42	32	35	24	24	29	313
	2009	36	35	30	48	58	89	51	75	70	40	47	20	599
	2010	33	30	68	43	47	50	78	70	74	61	31	24	609
Nuisance	2008	2	2	0	0	2	3	0	1	2	5	1	2	20
	2009	2	1	1	1	2	2	3	5	6	3	1	1	28
	2010	0	3	5	1	3	5	2	7	3	4	1	1	35
Panic Alarm	2008	0	2	0	2	2	4	3	2	1	2	3	3	24
	2009	1	0	3	4	4	7	2	1	2	1	1	2	28
	2010	0	4	3	1	1	2	1	2	5	2	0	1	21
Paper Service	2008	9	5	4	6	7	10	4	8	4	3	4	1	65
	2009	10	8	5	6	6	0	11	8	7	8	6	2	77
	2010	1	5	7	14	11	5	12	11	2	3	0	0	71
Party	2008	3	6	10	11	8	18	15	20	17	5	2	1	116
	2009	6	0	1	5	10	19	4	14	8	4	3	4	78
	2010	4	2	3	5	9	9	13	10	5	2	0	1	63
Person - Missing	2008	3	5	0	3	4	3	4	3	4	2	5	2	38
	2009	2	1	3	1	4	9	3	5	1	7	5	0	41
	2010	0	5	3	2	1	2	2	3	0	1	3	3	25
Police - Miscellaneous	2008	8	8	16	7	15	12	13	16	10	14	14	9	142
	2009	14	0	13	2	16	13	6	5	10	10	8	18	115
	2010	4	9	18	18	19	8	13	23	28	10	16	16	182

Dispatched Call Type	Year	Jan	Feb	Mar	Apr	May	Jun	Jul	Aug	Sep	Oct	Nov	Dec	Total
Property - Found/Recovered	2008	17	15	14	8	9	10	7	22	11	14	16	5	148
	2009	6	5	14	15	12	15	21	12	10	6	7	5	128
	2010	7	12	11	11	8	17	9	20	13	9	7	9	133
Public Assist	2008	12	6	10	18	20	11	13	12	16	19	21	18	176
	2009	16	9	20	15	25	7	17	12	11	12	5	11	160
	2010	9	11	13	11	8	6	10	11	12	19	4	21	135
Rape	2008	0	1	0	0	0	0	0	1	1	0	0	1	3
	2009	0	1	0	0	0	0	2	0	0	0	0	0	3
	2010	0	0	0	0	0	0	1	0	0	0	0	0	1
Register Sex Offender	2008	0	0	0	0	0	0	0	0	0	6	0	0	6
	2009	0	3	1	3	0	0	2	6	2	0	2	0	19
	2010	0	2	3	0	2	0	3	3	4	4	0	0	21
Robbery	2008	4	0	6	0	0	1	0	0	0	0	0	0	11
	2009	1	0	1	0	3	1	0	1	0	0	1	1	9
	2010	2	2	0	0	0	0	0	0	0	0	0	0	4
Runaway	2008	6	1	2	2	5	2	2	2	2	1	3	3	31
	2009	7	1	7	1	4	2	1	5	2	2	4	4	40
	2010	5	6	10	4	6	2	3	2	1	5	1	4	49
Security Check	2008	0	0	0	1	0	0	0	2	0	0	1	1	5
	2009	0	0	1	0	0	0	0	0	0	0	0	0	1
	2010	0	0	0	0	0	0	0	0	0	1	1	0	2
Sex Offenses	2008	2	2	0	0	0	1	0	0	2	0	0	0	7
	2009	1	1	2	0	0	0	2	3	1	1	0	0	11
	2010	0	0	0	1	0	2	3	1	1	0	0	0	8
Shoplifting	2008	2	5	3	4	3	1	3	4	5	0	2	2	34
	2009	1	1	2	2	0	0	1	2	0	1	2	2	14
	2010	2	0	1	0	2	2	1	3	0	1	1	0	13
Silent Alarm - Hold Up	2008	2	1	0	0	0	0	0	1	0	3	3	0	10
	2009	3	0	0	0	0	1	0	0	0	0	3	0	7
	2010	0	0	0	0	0	0	0	0	0	0	0	0	0
Special Operations	2008	0	0	0	0	0	0	0	0	0	0	0	0	0
	2009	0	0	2	0	1	0	0	0	0	0	0	0	3
	2010	0	1	0	0	0	0	1	0	1	0	0	0	3

Dispatched Call Type	Year	Jan	Feb	Mar	Apr	May	Jun	Jul	Aug	Sep	Oct	Nov	Dec	Total
Subject Pursuit	2008	0	0	0	0	0	0	0	0	0	0	0	0	0
	2009	0	0	0	0	0	0	0	0	0	0	0	0	0
	2010	0	0	0	0	0	0	0	0	0	0	0	0	0
Subject Stop	2008	18	14	15	11	19	22	21	19	12	14	21	16	202
	2009	9	22	14	31	20	18	22	19	14	11	5	14	199
	2010	22	15	14	11	20	23	14	19	13	12	11	9	183
Substance Abuse	2008	2	0	0	0	2	0	2	0	0	0	2	0	8
	2009	7	5	3	8	11	8	8	9	6	9	5	4	83
	2010	11	9	5	6	18	3	4	11	4	12	0	4	85
Suicide Attempt	2008	5	3	4	3	3	4	1	2	6	3	2	3	39
	2009	2	3	2	0	1	7	1	6	3	6	3	4	38
	2010	4	4	3	2	0	4	1	3	2	0	0	0	23
Suspicious (Person, Circum, Vehicle)	2008	122	80	104	95	100	109	106	104	101	128	99	96	1244
	2009	109	139	107	119	113	120	96	105	102	101	77	90	1278
	2010	109	139	107	119	113	120	96	105	102	101	77	90	1278
Suspicious - Priority	2008	5	1	4	0	11	13	9	11	7	7	9	5	82
	2009	3	0	5	1	7	7	5	9	6	10	4	9	66
	2010	9	2	9	6	8	9	8	9	2	4	0	4	70
Theft	2008	19	20	17	31	22	26	23	24	25	13	21	19	260
	2009	14	8	18	31	22	16	15	16	14	15	7	13	189
	2010	16	20	17	17	25	20	7	21	20	15	27	13	218
Traffic Control	2008	0	2	2	2	2	4	2	4	3	2	5	7	35
	2009	0	5	2	5	0	2	5	2	2	1	6	4	34
	2010	1	3	2	3	2	2	4	9	1	1	5	6	39
Traffic Hazard	2008	23	13	17	19	29	27	34	34	35	26	27	31	315
	2009	10	7	13	20	22	21	32	29	20	8	11	20	213
	2010	20	7	13	9	6	6	9	7	12	5	5	7	106
Traffic Problems	2008	14	12	21	27	52	47	40	27	43	42	35	27	387
	2009	19	18	33	37	31	29	16	38	21	21	21	25	309
	2010	31	1	31	21	28	24	25	22	31	21	28	21	276
Traffic Stops	2008	304	244	161	194	254	122	193	224	186	266	231	285	2664
	2009	259	242	198	227	215	159	234	290	240	297	238	260	2859
	2010	320	323	297	294	259	278	201	124	313	303	229	130	3071

Dispatched Call Type	Year	Jan	Feb	Mar	Apr	May	Jun	Jul	Aug	Sep	Oct	Nov	Dec	Total
Trespassing	2008	3	0	1	4	3	4	7	6	3	3	2	1	37
	2009	0	4	1	3	3	3	6	7	1	2	2	0	32
	2010	2	0	2	4	4	4	5	2	2	0	0	0	25
Vehicle Complaint Non Priority	2008	0	0	0	0	0	0	0	1	2	0	0	2	5
	2009	0	0	0	0	0	0	0	1	3	0	0	0	4
	2010	0	0	0	0	1	0	0	1	0	0	1	0	3
Vehicle Prowls	2008	14	36	24	28	28	33	33	35	40	31	37	35	374
	2009	15	20	38	23	29	13	15	16	16	20	16	13	234
	2010	36	18	36	35	17	19	11	30	13	15	13	2	245
Vehicle Recovery	2008	17	14	7	18	7	5	9	4	11	15	18	11	136
	2009	6	2	6	6	1	0	4	2	3	3	4	3	40
	2010	6	2	6	6	1	0	4	2	3	3	4	3	40
Vehicle Theft	2008	17	14	7	18	7	5	9	4	11	15	18	11	136
	2009	1	1	4	4	1	4	4	2	4	4	4	4	37
	2010	15	6	10	5	3	6	8	5	4	3	2	3	70
Violate Court Order	2008	3	3	7	7	4	3	3	1	0	4	4	7	46
	2009	3	6	6	4	3	0	2	6	8	4	0	3	45
	2010	1	0	2	2	3	3	2	5	4	2	0	0	24
Warrant Service	2008	5	3	3	0	0	7	6	6	5	9	9	9	62
	2009	6	13	16	7	11	9	11	5	8	9	8	9	112
	2010	12	8	9	9	13	16	8	4	7	6	2	2	96
Welfare Check	2008	14	10	10	7	6	6	3	9	11	11	5	5	97
	2009	12	9	16	10	22	14	19	15	19	17	14	18	185
	2010	12	9	16	10	22	14	19	15	19	17	14	18	185
Dispatched Events	2008	1109	931	835	905	1117	970	1121	1141	1085	1131	1024	1066	12435
	2009	1037	942	1011	1118	1167	1123	1201	1194	1038	1060	915	946	12755
	2010	1063	987	1170	1089	1066	1117	1092	1049	1191	1028	916	743	12511
Dispatched Call Type	Year	Jan	Feb	Mar	Apr	May	Jun	Jul	Aug	Sep	Oct	Nov	Dec	Total

CITY OF MUKILTEO

SUPPORT SERVICES DIVISION

ACTIVITY COMPARISON

Activity	Year	Jan	Feb	Mar	Apr	May	Jun	Jul	Aug	Sep	Oct	Nov	Dec	Total
Case Reports	2008	199	166	179	181	168	208	222	214	181	172	172	160	2222
	2009	177	134	183	191	209	177	172	167	178	199	161	174	2122
	2010	210	175	214	208	165	200	189	213	172	174	174	162	2256
Concealed Pistol Licenses	2008	14	8	19	15	14	16	28	17	16	17	18	29	211
	2009	16	20	33	21	17	25	21	6	7	8	8	9	191
	2010	11	4	33	13	14	10	14	15	8	15	11	5	153
Disclosure Requests Processed	2008	121	91	114	112	145	171	168	165	150	155	143	117	1652
	2009	87	92	95	123	122	123	129	111	110	117	147	115	1371
	2010	115	102	124	161	101	154	137	101	97	144	129	111	1434
Dog Licenses	2008	184	18	8	15	14	16	28	17	16	17	18	29	380
	2009	173	17	12	14	9	4	8	4	5	2	2	0	250
	2010	214	13	6	9	3	9	6	8	0	2	1	0	271
Fingerprints	2008	27	18	22	11	18	8	10	13	23	27	11	8	196
	2009	21	24	23	14	18	24	18	7	24	25	9	16	223
	2010	16	17	16	9	8	17	27	16	31	12	11	9	189
FIR Cards Processed	2008	3	4	5	11	3	4	8	3	2	4	1	4	52
	2009	1	4	0	1	3	2	1	0	0	2	2	2	18
	2010	0	0	2	2	1	8	1	6	5	0	2	0	27
Clearance Letters	2008	3	0	1	3	3	0	1	1	2	0	0	5	19
	2009	6	0	0	2	2	3	4	1	4	3	4	1	30
	2010	1	1	2	7	0	0	0	1	3	0	2	1	18
Tickets-Citations-Processed	2008	47	27	31	43	28	28	32	45	33	46	30	67	457
	2009	49	42	26	28	38	27	20	37	22	36	40	32	397
	2010	32	39	52	39	38	29	30	33	43	34	44	37	450
Tickets-Infractions-Processed	2008	229	129	147	138	286	155	84	199	316	288	149	121	2241
	2009	165	174	105	155	356	311	346	347	234	259	175	168	2795
	2010	203	207	245	225	156	152	193	185	254	236	237	110	2395
Tickets-Traffic-Paid	2008	59	40	42	31	44	32	17	11	23	29	36	34	398
	2009	26	31	29	15	35	26	25	46	42	45	40	140	500
	2010	56	67	58	57	53	28	18	15	28	55	29	21	485
Tickets-Parking-Paid	2008	14	29	46	15	36	22	32	33	50	49	22	24	372
	2009	24	35	28	33	91	222	119	140	86	49	31	12	870
	2010	38	18	52	29	18	37	68	113	58	125	90	72	718

Activity	Year	Jan	Feb	Mar	Apr	May	Jun	Jul	Aug	Sep	Oct	Nov	Dec	Total
Tickets-Non-traffic-Paid	2008	0	0	0	1	0	0	1	1	1	1	0	2	7
	2009	0	3	1	1	0	0	0	0	1	4	3	6	19
	2010	4	1	4	0	1	4	2	2	3	3	1	0	25
Average Incoming Calls/Day	2008	41	36	42	40	39	43	39	37	36	42	45	45	40
	2009	43	28	29	24	26	31	34	24	26	25	29	33	29
	2010	29	23	25	25	28	28	28	25	26	25	23	20	25
Average Walk-ins Per Day	2008	20	17	20	16	17	18	17	15	18	19	20	10	19
	2009	19	15	16	16	16	24	18	15	16	14	16	17	20
	2010	22	17	21	17	16	19	18	17	18	16	17	16	18

CITY OF MUKILTEO
CITATIONS, INFRACTIONS
AND JAIL BOOKINGS

Activity	Year	Jan	Feb	Mar	Apr	May	June	July	Aug	Sep	Oct	Nov	Dec	Total
Infractions	2008	204	79	100	107	234	122	35	142	214	230	127	93	1687
Speeding		92	54	76	82	199	86	35	41	64	79	53	45	906
Other		112	25	24	25	35	36	0	101	45	92	74	48	617
Infractions	2009	165	126	76	102	128	85	147	155	134	193	129	140	1580
Speeding		50	49	39	49	50	41	67	69	80	81	60	106	741
Other		105	77	37	53	78	44	80	86	54	112	69	34	829
Infractions	2010	157	177	170	189	125	90	60	68	148	159	168	79	1590
Speeding		77	99	108	117	71	58	19	33	73	76	97	106	882
Other		105	77	37	53	78	44	80	86	54	112	69	34	708
Parking	2008	25	50	47	31	52	33	49	57	102	58	22	28	554
	2009	44	48	29	53	228	226	199	192	100	60	46	20	1245
	2010	43	22	73	35	29	61	132	117	105	77	69	31	794
Criminal	2008	9	3	7	10	6	8	12	13	6	8	8	32	122
Non-Traffic	2009	29	15	11	2	16	13	7	11	9	12	17	6	148
	2010	8	5	20	13	12	8	10	16	12	15	15	5	139
Criminal Traffic	2008	38	24	24	23	22	20	20	32	27	32	17	35	314
DUI		2	1	1	4	1	2	3	5	5	9	1	10	44
Other		36	23	23	19	21	17	17	27	22	23	16	25	269
Criminal Traffic	2009	49	27	15	26	23	14	13	26	13	24	23	26	279
DUI		4	2	0	5	1	6	0	4	2	0	4	5	33
Other		45	25	15	21	22	8	13	22	11	24	19	21	246
Criminal Traffic	2010	24	33	32	26	26	21	20	17	31	19	29	22	300
DUI		3	0	5	5	4	3	7	6	4	4	5	7	53
Other		21	33	27	21	22	18	13	11	27	15	24	15	247
Bookings	2008	13	9	9	9.5	15	16.5	14	13	12.5	14	17.5	16	158.5
	2009	10	10	15	7.33	7.13	7	16.83	10.3	6.5	13	14.75	11.83	129.67
	2010	6.5	6.67	12.5	14.0	16.5	13.0	10.7	11.0	12.75	12.5	7.0	11.83	135.62
Activity	Year	Jan	Feb	Mar	Apr	May	June	July	Aug	Sep	Oct	Nov	Dec	Total



10500 47 Pl W, Mukilteo, WA 98275

2010 EMPLOYEE TRAINING HOURS REPORT

<u>Employee</u>	<u>Department</u>	<u>Job Title</u>	<u>Course Hours</u>
Ballinger, Jeremy	Police	Corporal	54½
Baron, Matthew	Police	Sergeant	41
Becker, Jeffrey	Police	Police Officer	99
Brecht, Jess	Police	Police Officer	72
Bredstrand, Joe	Police	Corporal	95
Castle, Kristie	Support	Support Services Technician	8
Davis, Colt	Police	Police Officer	89
Dillon, William	Police	Sergeant	57
Dodds, Alicia	Police	Police Officer	100½
Duke, Shanita	Police	Community Services Officer	11
Duran, Glenda	Support	Support Services Technician	6½
Ernst, John	Police	Police Officer	78
Evans, Joe	Police	Police Officer	51½
Falso, Anthony	Police	Corporal	91½
Fanning, Steve	Police	Sergeant	61½
Greenmun, Shaun	Police	Sergeant	72½
Hamilton, Joe	Police	Police Officer	187½
Kang, Cheol	Police	Crime Prevention Officer	40
Kania, Kristal	Police	Police Officer	106
Kingery, David	Police	Admin Coordinator	26½
Macklin, Charles	Police	Commander	34½
Marienau, Gary	Police	Corporal	109
Mittelbach, Renata	Police	Police Officer	47
Murphy, Michael	Police	Chief of Police	0
Pew, Paul	Police	Sergeant	70½
Rekow, Jennifer	Police	Police Officer	41
Sanchez, Adam	Police	Police Officer	127½



10500 47 Pl W, Mukilteo, WA 98275

Smith, Lance	----- Police	----- Police Officer	----- 38
Stone, Nicole	----- Police	----- Police Officer	----- 105
Swanberg, Brenda	----- Police	----- Police Officer	----- 109
Thomas, Cynthia	----- Police	----- Office Supervisor	----- 16½
Wheeler, Michael	----- Police	----- Police Officer	----- 94½
		Grand Total	2,141



CITY OF MUKILTEO

UNIFORM CRIME REPORTS



CITY OF MUKILTEO

10500 47 Pl W, Mukilteo, WA 98275

UNIFORM CRIME REPORTS 2008 – 2010 COMPARISON

Crime	Year	Jan	Feb	March	April	May	June	July	Aug	Sept	Oct	Nov	Dec	Total
Homicide	2008	0	0	0	0	0	0	0	0	0	0	0	0	0
	2009	0	0	0	0	0	0	0	0	0	0	0	0	0
	2010	0	0	0	0	0	0	0	0	0	0	0	0	0
Manslaughter	2008	0	0	0	0	0	0	0	0	0	0	0	0	0
	2009	0	0	0	0	0	0	0	0	0	0	0	0	0
	2010	0	0	0	0	0	0	0	0	0	0	0	0	0
Forcible Rape	2008	2	1	0	0	0	0	0	0	0	0	0	0	3
	2009	1	1	1	0	0	1	1	0	0	0	1	0	6
	2010	0	1	0	0	0	0	1	0	1	0	0	0	3
Robbery	2008	0	0	0	1	0	0	0	0	0	0	0	1	2
	2009	0	0	0	1	3	1	0	0	0	0	1	0	6
	2010	1	2	0	0	0	0	0	0	0	0	0	0	3
Aggravated Assault	2008	1	0	8	1	1	1	0	4	0	3	1	1	21
	2009	0	0	1	2	1	0	1	6	1	2	0	3	17
	2010	1	0	1	3	0	1	1	2	0	1	2	1	13
Simple Assault	2008	4	2	4	13	5	7	13	12	10	15	7	6	98
	2009	8	9	9	2	7	10	8	3	7	6	8	5	82
	2010	6	5	8	12	5	3	10	9	7	12	10	8	95
Burglary	2008	13	18	10	11	8	21	19	20	16	13	4	6	159
	2009	6	7	9	10	15	18	7	10	12	13	9	17	133
	2010	13	5	9	8	13	18	12	8	12	12	12	12	134
Theft	2008	28	19	29	25	26	40	36	19	31	58	27	24	362
	2009	36	22	46	48	41	31	22	24	23	30	19	29	371
	2010	39	37	49	32	34	45	15	51	20	27	19	15	383
Motor Vehicle Theft	2008	3	6	8	5	7	7	3	10	2	3	1	1	56
	2009	0	1	5	8	1	3	3	1	2	3	2	3	32
	2010	5	4	6	3	1	6	10	6	3	2	1	3	50
Grand Total	2008	51	46	59	56	47	76	61	65	59	92	40	39	691
	2009	51	40	71	71	68	64	42	44	44	54	39	57	645
	2010	58	54	73	58	53	73	49	76	43	54	44	39	674

WASHINGTON STATE

UNIFORM CRIME REPORT

NOTE: Those agencies reporting less than 12 months of data for either year will not show the "Percent of Change"

Table 7
Part 1 Crimes and Clearance Reported
By Agency, County, Offense
Rate per 1,000 Population and Percent of Change
2008 - 2009

Individuals using these tabulations are cautioned against drawing conclusions by making direct comparisons between cities/counties due to the existence of numerous factors which affect the amount and type of crime from place to place. It is important to remember that crime is a social problem and, therefore, a concern of the entire community. The efforts of law enforcement are limited to factors within its control.

CAUTION: The populations of non-reporting agencies are shown as zero.

		Year	Months Reported	Crime Index Offenses		Violent Crime					Property Crime				Motor Vehicle Theft	Total Cleared	Juvenile Cleared		
				Total	Rate per 1,000	Total	Rate per 1,000	Murder	Rape	Robbery	Agg. Assault	Total	Rate per 1,000	Arson				Burglary	Larceny
ADAMS CO. S.O.		2008	12	331	34.6	27	2.8	0	5	1	21	304	31.8	2	93	173	36	87	24
Population:	9,665	2009	12	288	29.8	24	2.5	1	4	7	12	264	27.3	5	97	130	32	57	9
Percent of Change				-13.0%	-13.9%	-11.1%	-12.0%		-20.0%	600.0%	-42.9%	-13.2%	-14.1%	150.0%	4.3%	-24.9%	-11.1%	-34.5%	-62.5%
OTHELLO P.D.		2008	12	560	86.2	30	4.6	0	4	4	22	530	81.6	3	74	410	43	86	25
Population:	6,595	2009	12	502	76.1	33	5.0	0	2	12	19	469	71.1	4	72	353	40	99	25
Percent of Change				-10.4%	-11.7%	10.0%	8.3%		-50.0%	200.0%	-13.6%	-11.5%	-12.9%	33.3%	-2.7%	-13.9%	-7.0%	15.1%	0.0%
RITZVILLE P.D.		2008	12	67	38.5	0	0.0	0	0	0	0	67	38.5	0	16	48	3	3	0
Population:	1,740	2009	12	62	35.6	0	0.0	0	0	0	0	62	35.6	1	16	42	3	11	9
Percent of Change				-7.5%	-7.5%							-7.5%	-7.5%		0.0%	-12.5%	0.0%	266.7%	
COUNTY TOTAL		2008	36	958	53.8	57	3.2	0	9	5	43	901	50.6	5	183	631	82	176	49
Population:	18,000	2009	36	852	47.3	57	3.2	1	6	19	31	795	44.2	10	185	525	75	167	43
Percent of Change				-11.1%	-12.1%	0.0%	1.1%		-33.3%	280.0%	-27.9%	-11.8%	-12.7%	100.0%	1.1%	-16.8%	-8.5%	-5.1%	-12.2%

ASOTIN CO. S.O.		2008	12	206	15.9	14	1.1	1	2	0	11	192	14.8	0	39	148	5	20	1
Population:	13,010	2009	12	212	16.3	12	0.9	0	1	1	10	200	15.4	0	41	147	12	5	0
Percent of Change				2.9%	2.3%	-14.3%	-14.8%	-100.0%	-50.0%		-9.1%	4.2%	3.5%		5.1%	-0.7%	140.0%	-75.0%	-100.0%
ASOTIN P.D.		2008	11	30	24.8	4	3.3	0	0	0	4	26	21.5	0	5	21	0	16	7
Population:	1,230	2009	12	32	26.0	17	13.8	0	0	1	16	15	12.2	0	6	8	1	24	2
Percent of Change																			
CLARKSTON P.D.		2008	12	368	50.7	21	2.9	0	0	4	17	347	47.8	0	38	302	7	79	25
Population:	7,260	2009	12	365	50.3	20	2.8	0	2	5	13	345	47.5	0	55	270	20	78	19
Percent of Change				-0.8%	-0.8%	-4.8%	-4.8%			25.0%	-23.5%	-0.6%	-0.6%		44.7%	-10.6%	185.7%	-1.3%	-24.0%
COUNTY TOTAL		2008	35	604	28.2	39	1.8	1	2	4	32	565	26.4	0	82	471	12	115	33
Population:	21,500	2009	36	609	28.3	49	2.3	0	3	7	39	560	26.0	0	102	425	33	107	21
Percent of Change																			

BENTON CO. S.O.		2008	12	623	16.7	68	1.8	0	9	5	54	555	14.9	4	206	310	35	130	37
Population:	37,930	2009	12	605	16.0	74	2.0	0	10	6	58	531	14.0	0	192	303	36	184	33
Percent of Change				-2.9%	-4.5%	8.8%	7.0%		11.1%	20.0%	7.4%	-4.3%	-5.9%	-100.0%	-6.8%	-2.3%	2.9%	41.5%	-10.8%
KENNEWICK P.D.		2008	12	2,647	40.2	235	3.6	1	38	40	156	2,412	36.6	30	409	1,810	163	973	190
Population:	67,180	2009	12	2,597	38.7	244	3.6	0	37	33	174	2,353	35.0	41	352	1,812	148	1,029	254
Percent of Change				-1.9%	-3.8%	3.8%	1.8%	-100.0%	-2.6%	-17.5%	11.5%	-2.4%	-4.4%	36.7%	-13.9%	0.1%	-9.2%	5.8%	33.7%
PROSSER P.D.		2008	12	216	42.6	6	1.2	0	1	1	4	210	41.4	1	51	139	19	56	24
Population:	5,110	2009	12	151	29.5	6	1.2	0	3	1	2	145	28.4	2	31	102	10	52	23
Percent of Change				-30.1%	-30.6%	0.0%	-0.7%		200.0%	0.0%	-50.0%	-31.0%	-31.4%	100.0%	-39.2%	-26.6%	-47.4%	-7.1%	-4.2%

NOTE: Those agencies reporting less than 12 months of data for either year will not show the "Percent of Change"

Table 7
Part 1 Crimes and Clearance Reported
By Agency, County, Offense
Rate per 1,000 Population and Percent of Change
2008 - 2009

CAUTION: The populations of non-reporting agencies are shown as zero.

	Year	Months Reported	Crime Index Offenses		Violent Crime				Property Crime					Motor Vehicle Theft	Total Cleared	Juvenile Cleared			
			Total	Rate per 1,000	Total	Rate per 1,000	Murder	Rape	Robbery	Agg. Assault	Total	Rate per 1,000	Arson				Burglary	Larceny	
RICHLAND P.D.	2008	12	1,156	25.1	101	2.2	0	25	14	62	1,055	22.9	7	206	788	54	422	102	
Population: 47,410	2009	12	1,192	25.1	92	1.9	0	22	12	58	1,100	23.2	5	160	873	62	474	114	
Percent of Change			3.1%	0.2%	-8.9%	-11.5%		-12.0%	-14.3%	-6.5%	4.3%	1.3%	-28.6%	-22.3%	10.8%	14.8%	12.3%	11.8%	
WEST RICHLAND P.D.	2008	12	137	12.3	5	0.4	0	2	0	3	132	11.8	1	30	98	3	20	12	
Population: 11,670	2009	12	190	16.3	8	0.7	0	1	0	7	182	15.6	1	26	144	11	21	8	
Percent of Change			38.7%	32.9%	60.0%	53.3%		-50.0%		133.3%	37.9%	32.1%	0.0%	-13.3%	46.9%	266.7%	5.0%	-33.3%	
COUNTY TOTAL	2008	60	4,779	28.9	415	2.5	1	75	60	279	4,364	26.4	43	902	3,145	274	1,601	365	
Population: 169,300	2009	60	4,735	28.0	424	2.6	0	73	52	299	4,311	25.5	49	761	3,234	267	1,760	432	
Percent of Change			-0.9%	-3.1%	2.2%	4.5%	-100.0%	-2.7%	-13.3%	7.2%	-1.2%	-3.4%	14.0%	-15.6%	2.8%	-2.6%	9.9%	18.4%	

CHELAN CO. S.O.	2008	12	915	22.2	35	0.8	2	15	3	15	880	21.3	2	120	698	60	172	27	
Population: 41,640	2009	12	971	23.3	50	1.2	1	12	7	30	921	22.1	3	140	740	38	156	26	
Percent of Change			6.1%	5.2%	42.9%	41.7%	-50.0%	-20.0%	133.3%	100.0%	4.7%	3.8%	50.0%	16.7%	6.0%	-36.7%	-9.3%	-3.7%	
WENATCHEE P.D.	2008	12	1,307	42.4	99	3.2	1	21	12	65	1,208	39.2	1	212	934	61	311	104	
Population: 30,960	2009	12	1,309	42.3	98	3.2	1	14	17	66	1,211	39.1	8	182	954	67	277	84	
Percent of Change			0.2%	-0.3%	-1.0%	-1.5%	0.0%	-33.3%	41.7%	1.5%	0.2%	-0.2%	700.0%	-14.2%	2.1%	9.8%	-10.9%	-19.2%	
COUNTY TOTAL	2008	24	2,222	30.8	134	1.8	3	36	15	80	2,088	29.0	3	332	1,632	121	483	131	
Population: 72,600	2009	24	2,280	31.4	148	2.1	2	26	24	96	2,132	29.4	11	322	1,694	105	433	110	
Percent of Change			2.6%	1.9%	10.4%	11.2%	-33.3%	-27.8%	60.0%	20.0%	2.1%	1.4%	266.7%	-3.0%	3.8%	-13.2%	-10.4%	-16.0%	

CLALLAM CO. S.O.	2008	12	651	15.8	59	1.4	2	25	2	30	592	14.4	7	166	380	39	152	20	
Population: 41,340	2009	12	693	16.8	87	2.1	0	21	7	59	606	14.7	3	183	387	33	185	31	
Percent of Change			6.5%	6.1%	47.5%	47.0%	-100.0%	-16.0%	250.0%	96.7%	2.4%	2.1%	-57.1%	10.2%	1.8%	-15.4%	21.7%	55.0%	
FORKS P.D.	2008	12	185	57.7	39	12.2	0	7	5	27	146	45.6	0	27	118	1	38	6	
Population: 3,185	2009	12	118	37.0	26	8.2	2	5	2	17	92	28.9	0	23	68	1	28	8	
Percent of Change			-36.2%	-35.8%	-33.3%	-32.9%		-28.6%	-60.0%	-37.0%	-37.0%	-36.6%		-14.8%	-42.4%	0.0%	-26.3%	33.3%	
HOH TRIBAL P.D.	2008	0	No Report From This Agency For This Period																
Population: 0	2009	0	No Report From This Agency For This Period																
Percent of Change																			
LOWER ELWHA TRIBAL P.D.	2008	0	No Report From This Agency For This Period																
Population: 0	2009	0	No Report From This Agency For This Period																
Percent of Change																			
MAKAH TRIBAL P.D.	2008	0	No Report From This Agency For This Period																
Population: 0	2009	0	No Report From This Agency For This Period																
Percent of Change																			

NOTE: Those agencies reporting less than 12 months of data for either year will not show the "Percent of Change"

Table 7
Part 1 Crimes and Clearance Reported
By Agency, County, Offense
Rate per 1,000 Population and Percent of Change
2008 - 2009

CAUTION: The populations of non-reporting agencies are shown as zero.

	Year	Months Reported	Crime Index Offenses		Violent Crime				Property Crime					Motor Vehicle Theft	Total Cleared	Juvenile Cleared		
			Total	Rate per 1,000	Total	Rate per 1,000	Murder	Rape	Robbery	Agg. Assault	Total	Rate per 1,000	Arson				Burglary	Larceny
PORT ANGELES P.D.	2008	12	998	52.1	67	3.5	1	16	14	36	931	48.6	17	145	735	34	209	44
Population: 19,260	2009	12	890	46.2	80	4.2	1	25	15	39	810	42.1	8	152	616	34	157	33
Percent of Change			-10.8%	-11.2%	19.4%	18.8%	0.0%	56.3%	7.1%	8.3%	-13.0%	-13.4%	-52.9%	4.8%	-16.2%	0.0%	-24.9%	-25.0%
QUILEUTE TRIBAL P.D.	2008	0	No Report From This Agency For This Period															
Population: 0	2009	0	No Report From This Agency For This Period															
Percent of Change																		
SEQUIM P.D.	2008	12	266	47.4	25	4.5	0	6	2	17	241	43.0	3	36	193	9	80	23
Population: 5,715	2009	12	276	48.3	20	3.5	0	2	4	14	256	44.8	2	45	201	8	93	28
Percent of Change			3.8%	1.9%	-20.0%	-21.5%		-66.7%	100.0%	-17.6%	6.2%	4.3%	-33.3%	25.0%	4.1%	-11.1%	16.3%	21.7%
COUNTY TOTAL	2008	48	2,100	30.3	190	2.7	3	54	23	110	1,910	27.6	27	374	1,426	83	479	93
Population: 69,500	2009	48	1,977	28.4	213	3.1	3	53	28	129	1,764	25.4	13	403	1,272	76	463	100
Percent of Change			-5.9%	-6.3%	12.1%	12.6%	0.0%	-1.9%	21.7%	17.3%	-7.6%	-8.0%	-51.9%	7.8%	-10.8%	-8.4%	-3.3%	7.5%
CLARK CO. S.O.	2008	12	4,709	22.6	276	1.3	2	66	47	161	4,433	21.3	37	813	2,919	664	773	116
Population: 211,885	2009	12	4,203	19.8	276	1.3	1	75	62	138	3,927	18.5	33	771	2,640	483	730	98
Percent of Change			-10.7%	-12.3%	0.0%	-1.7%	-50.0%	13.6%	31.9%	-14.3%	-11.4%	-12.9%	-10.8%	-5.2%	-9.6%	-27.3%	-5.6%	-15.5%
BATTLE GROUND P.D.	2008	12	407	24.4	38	2.3	0	13	5	20	369	22.1	0	65	276	28	116	33
Population: 17,150	2009	12	549	32.0	62	3.6	1	24	7	30	487	28.4	3	59	392	33	192	53
Percent of Change			34.9%	31.4%	63.2%	59.0%		84.6%	40.0%	50.0%	32.0%	28.6%		-9.2%	42.0%	17.9%	65.5%	60.6%
CAMAS P.D.	2008	12	468	28.0	20	1.2	0	11	3	6	448	26.8	5	73	349	21	76	31
Population: 16,950	2009	12	366	21.6	14	0.8	0	7	3	4	352	20.8	4	61	274	13	65	21
Percent of Change			-21.8%	-22.9%	-30.0%	-31.0%		-36.4%	0.0%	-33.3%	-21.4%	-22.6%	-20.0%	-16.4%	-21.5%	-38.1%	-14.5%	-32.3%
LA CENTER P.D.	2008	12	55	21.9	6	2.4	0	0	0	6	49	19.5	1	4	42	2	14	5
Population: 2,545	2009	12	37	14.5	0	0.0	0	0	0	0	37	14.5	0	5	26	6	6	2
Percent of Change			-32.7%	-33.7%	-100.0%	-100.0%				-100.0%	-24.5%	-25.5%	-100.0%	25.0%	-38.1%	200.0%	-57.1%	-60.0%
RIDGEFIELD P.D.	2008	12	107	26.7	3	0.7	0	1	2	0	104	25.9	0	11	86	7	13	5
Population: 4,215	2009	12	61	14.5	2	0.5	0	0	1	1	59	14.0	0	10	47	2	9	1
Percent of Change			-43.0%	-45.7%	-33.3%	-36.5%		-100.0%	-50.0%		-43.3%	-46.0%		-9.1%	-45.3%	-71.4%	-30.8%	-80.0%
VANCOUVER P.D.	2008	12	6,964	42.9	605	3.7	0	105	176	324	6,359	39.2	61	842	4,248	1,208	1,545	210
Population: 164,500	2009	12	6,649	40.4	656	4.0	6	117	158	375	5,993	36.4	49	886	4,159	899	1,777	176
Percent of Change			-4.5%	-5.7%	8.4%	7.0%		11.4%	-10.2%	15.7%	-5.8%	-7.0%	-19.7%	5.2%	-2.1%	-25.6%	15.0%	-16.2%
WASHOUGAL P.D.	2008	12	311	23.1	35	2.6	0	10	3	22	276	20.5	3	60	200	13	80	17
Population: 13,870	2009	12	264	19.0	23	1.7	0	5	4	14	241	17.4	4	37	177	23	46	11
Percent of Change			-15.1%	-17.5%	-34.3%	-36.1%		-50.0%	33.3%	-36.4%	-12.7%	-15.1%	33.3%	-38.3%	-11.5%	76.9%	-42.5%	-35.3%

NOTE: Those agencies reporting less than 12 months of data for either year will not show the "Percent of Change"

Table 7
Part 1 Crimes and Clearance Reported
By Agency, County, Offense
Rate per 1,000 Population and Percent of Change
2008 - 2009

CAUTION: The populations of non-reporting agencies are shown as zero.

	Year	Months Reported	Crime Index Offenses		Violent Crime				Property Crime					Motor Vehicle Theft	Total Cleared	Juvenile Cleared			
			Total	Rate per 1,000	Total	Rate per 1,000	Murder	Rape	Robbery	Agg. Assault	Total	Rate per 1,000	Arson				Burglary	Larceny	
WSU VANCOUVER P.D.	2008	12	18	---	0	---	0	0	0	0	18	---	0	0	16	2	0	0	
Population:	0	2009	29	---	0	---	0	0	0	0	29	---	1	1	26	1	0	0	
Percent of Change																			
COUNTY TOTAL	2008	96	13,039	30.7	983	2.3	2	206	236	539	12,056	28.4	107	1,868	8,136	1,945	2,617	417	
Population:	431,115	2009	12,158	28.2	1,033	2.4	8	228	235	562	11,125	25.8	94	1,830	7,741	1,460	2,825	362	
Percent of Change			-6.8%	-8.3%	5.1%	6.8%	300.0%	10.7%	-0.4%	4.3%	-7.7%	-9.2%	-12.1%	-2.0%	-4.9%	-24.9%	7.9%	-13.2%	

COLUMBIA CO. S.O.	2008	12	208	50.7	2	0.5	0	0	0	2	206	50.2	0	29	170	7	18	0	
Population:	4,100	2009	160	39.0	2	0.5	0	0	0	2	158	38.5	0	26	120	12	16	8	
Percent of Change			-23.1%	-23.1%	0.0%	0.0%				0.0%	-23.3%	-23.3%		-10.3%	-29.4%	71.4%	-11.1%		
COUNTY TOTAL	2008	12	208	50.7	2	0.5	0	0	0	2	206	50.2	0	29	170	7	18	0	
Population:	4,100	2009	160	39.0	2	0.5	0	0	0	2	158	38.5	0	26	120	12	16	8	
Percent of Change			-23.1%	-23.1%	0.0%	0.0%				0.0%	-23.3%	-23.3%		-10.3%	-29.4%	71.4%	-11.1%		

COWLITZ CO. S.O.	2008	12	765	18.4	50	1.2	1	25	2	22	715	17.2	5	240	407	63	106	15	
Population:	41,990	2009	706	16.8	36	0.9	0	9	4	23	670	16.0	12	236	360	62	121	18	
Percent of Change			-7.7%	-8.7%	-28.0%	-28.8%	-100.0%	-64.0%	100.0%	4.5%	-6.3%	-7.3%	140.0%	-1.7%	-11.5%	-1.6%	14.2%	20.0%	
CASTLE ROCK P.D.	2008	12	77	35.9	9	4.2	0	3	3	3	68	31.7	0	10	53	5	13	6	
Population:	2,145	2009	85	39.6	6	2.8	0	0	0	6	79	36.8	1	13	60	5	21	4	
Percent of Change			10.4%	10.4%	-33.3%	-33.3%		-100.0%	-100.0%	100.0%	16.2%	16.2%		30.0%	13.2%	0.0%	61.5%	-33.3%	
KALAMA P.D.	2008	12	69	27.9	2	0.8	0	2	0	0	67	27.1	0	7	58	2	13	1	
Population:	2,505	2009	53	21.2	1	0.4	0	0	0	1	52	20.8	1	7	40	4	12	5	
Percent of Change			-23.2%	-24.1%	-50.0%	-50.6%		-100.0%			-22.4%	-23.3%		0.0%	-31.0%	100.0%	-7.7%	400.0%	
KELSO P.D.	2008	12	918	77.1	70	5.9	0	27	12	31	848	71.3	3	129	641	75	237	60	
Population:	11,840	2009	945	79.8	46	3.9	0	10	5	31	899	75.9	3	147	670	79	241	56	
Percent of Change			2.9%	3.5%	-34.3%	-34.0%		-63.0%	-58.3%	0.0%	6.0%	6.6%	0.0%	14.0%	4.5%	5.3%	1.7%	-6.7%	
LONGVIEW P.D.	2008	12	2,102	58.6	150	4.2	1	34	43	72	1,952	54.4	27	310	1,453	162	437	85	
Population:	36,010	2009	2,171	60.3	114	3.2	1	31	29	53	2,057	57.1	17	385	1,438	217	493	58	
Percent of Change			3.3%	2.9%	-24.0%	-24.3%	0.0%	-8.8%	-32.6%	-26.4%	5.4%	5.0%	-37.0%	24.2%	-1.0%	34.0%	12.8%	-31.8%	
WOODLAND P.D.	2008	12	218	42.5	16	3.1	0	3	2	11	202	39.3	7	40	129	26	60	19	
Population:	5,195	2009	197	37.9	15	2.9	0	6	2	7	182	35.0	7	31	122	22	50	13	
Percent of Change			-9.6%	-10.7%	-6.3%	-7.3%		100.0%	0.0%	-36.4%	-9.9%	-10.9%	0.0%	-22.5%	-5.4%	-15.4%	-16.7%	-31.6%	
COUNTY TOTAL	2008	72	4,149	41.9	297	3.0	2	94	62	139	3,852	38.9	42	736	2,741	333	866	186	
Population:	99,685	2009	4,157	41.7	218	2.2	1	56	40	121	3,939	39.5	41	819	2,690	389	938	154	
Percent of Change			0.2%	-0.4%	-26.6%	-26.2%	-50.0%	-40.4%	-35.5%	-12.9%	2.3%	1.6%	-2.4%	11.3%	-1.9%	16.8%	8.3%	-17.2%	

NOTE: Those agencies reporting less than 12 months of data for either year will not show the "Percent of Change"

Table 7
Part 1 Crimes and Clearance Reported
By Agency, County, Offense
Rate per 1,000 Population and Percent of Change
2008 - 2009

CAUTION: The populations of non-reporting agencies are shown as zero.

	Year	Months Reported	Crime Index Offenses		Violent Crime				Property Crime					Motor Vehicle Theft	Total Cleared	Juvenile Cleared			
			Total	Rate per 1,000	Total	Rate per 1,000	Murder	Rape	Robbery	Agg. Assault	Total	Rate per 1,000	Arson				Burglary	Larceny	
DOUGLAS CO. S.O.	2008	12	472	18.7	48	1.9	0	7	6	35	424	16.8	4	119	272	29	70	11	
Population:	25,765	2009	588	22.8	44	1.7	0	7	2	35	544	21.1	5	192	321	26	78	14	
Percent of Change			24.6%	22.1%	-8.3%	-10.1%		0.0%	-66.7%	0.0%	28.3%	25.8%	25.0%	61.3%	18.0%	-10.3%	11.4%	27.3%	
EAST WENATCHEE P.D.	2008	12	625	54.0	24	2.1	2	7	1	14	601	51.9	1	66	515	19	231	76	
Population:	11,660	2009	647	55.5	23	2.0	0	3	5	15	624	53.5	2	82	517	23	194	67	
Percent of Change			3.5%	2.7%	-4.2%	-4.9%	-100.0%	-57.1%	400.0%	7.1%	3.8%	3.0%	100.0%	24.2%	0.4%	21.1%	-16.0%	-11.8%	
COUNTY TOTAL	2008	24	1,097	29.8	72	1.9	2	14	7	49	1,025	27.8	5	185	787	48	301	87	
Population:	37,425	2009	1,235	33.0	67	1.8	0	10	7	50	1,168	31.2	7	274	838	49	272	81	
Percent of Change			12.6%	10.8%	-6.9%	-5.4%	-100.0%	-28.6%	0.0%	2.0%	14.0%	12.1%	40.0%	48.1%	6.5%	2.1%	-9.6%	-6.9%	

FERRY CO. S.O.	2008	12	27	4.0	7	1.0	1	0	0	6	20	3.0	0	11	8	1	16	3	
Population:	6,795	2009	18	2.6	4	0.6	0	0	0	4	14	2.1	0	4	10	0	12	1	
Percent of Change			-33.3%	-34.3%	-42.9%	-43.7%	-100.0%			-33.3%	-30.0%	-31.0%		-63.6%	25.0%	-100.0%	-25.0%	-66.7%	
REPUBLIC P.D.	2008	12	20	20.0	2	2.0	0	0	0	2	18	18.0	0	5	12	1	15	1	
Population:	1,005	2009	10	10.0	3	3.0	0	1	0	2	7	7.0	0	3	4	0	7	1	
Percent of Change			-50.0%	-50.2%	50.0%	49.3%				0.0%	-61.1%	-61.3%		-40.0%	-66.7%	-100.0%	-53.3%	0.0%	
COUNTY TOTAL	2008	24	47	6.1	9	1.2	1	0	0	8	38	4.9	0	16	20	2	31	4	
Population:	7,800	2009	28	3.6	7	0.9	0	1	0	6	21	2.7	0	7	14	0	19	2	
Percent of Change			-40.4%	-41.2%	-22.2%	-21.2%	-100.0%			-25.0%	-44.7%	-45.4%		-56.3%	-30.0%	-100.0%	-38.7%	-50.0%	

FRANKLIN CO. S.O.	2008	12	177	12.1	13	0.9	0	1	1	11	164	11.2	1	52	95	16	56	18	
Population:	14,780	2009	182	12.3	16	1.1	0	6	3	7	166	11.2	1	56	94	15	44	9	
Percent of Change			2.8%	2.0%	23.1%	22.0%		500.0%	200.0%	-36.4%	1.2%	0.4%	0.0%	7.7%	-1.1%	-6.3%	-21.4%	-50.0%	
CONNELL P.D.	2008	12	38	11.7	1	0.3	0	0	0	1	37	11.4	0	5	30	2	16	3	
Population:	3,430	2009	25	7.3	1	0.3	0	0	0	1	24	7.0	0	2	22	0	8	4	
Percent of Change			-34.2%	-37.6%	0.0%	-5.1%				0.0%	-35.1%	-38.4%		-60.0%	-26.7%	-100.0%	-50.0%	33.3%	
PASCO P.D.	2008	12	1,854	35.5	166	3.2	1	19	46	100	1,688	32.3	24	468	1,030	166	387	110	
Population:	54,490	2009	1,803	33.1	218	4.0	1	29	45	143	1,585	29.1	24	315	1,079	167	405	91	
Percent of Change			-2.8%	-6.7%	31.3%	26.0%	0.0%	52.6%	-2.2%	43.0%	-6.1%	-9.9%	0.0%	-32.7%	4.8%	0.6%	4.7%	-17.3%	
COUNTY TOTAL	2008	36	2,069	29.5	180	2.5	1	20	47	112	1,889	26.9	25	525	1,155	184	459	131	
Population:	72,700	2009	2,010	27.6	235	3.3	1	35	48	151	1,775	24.4	25	373	1,195	182	457	104	
Percent of Change			-2.9%	-6.2%	30.6%	35.2%	0.0%	75.0%	2.1%	34.8%	-6.0%	-9.3%	0.0%	-29.0%	3.5%	-1.1%	-0.4%	-20.6%	

GARFIELD CO. S.O.	2008	12	58	25.2	2	0.9	0	0	0	2	56	24.3	0	20	34	2	3	1	
Population:	2,250	2009	59	26.2	3	1.3	0	0	0	3	56	24.9	0	16	36	4	13	4	
Percent of Change			1.7%	4.0%	50.0%	53.3%				50.0%	0.0%	2.2%		-20.0%	5.9%	100.0%	333.3%	300.0%	

NOTE: Those agencies reporting less than 12 months of data for either year will not show the "Percent of Change"

Table 7
Part 1 Crimes and Clearance Reported
By Agency, County, Offense
Rate per 1,000 Population and Percent of Change
2008 - 2009

CAUTION: The populations of non-reporting agencies are shown as zero.

		Months Year Reported		Crime Index Offenses		Violent Crime				Property Crime				Motor Vehicle Theft	Total Cleared	Juvenile Cleared			
				Total	Rate per 1,000	Total	Rate per 1,000	Murder	Rape	Robbery	Agg. Assault	Total	Rate per 1,000				Arson	Burglary	Larceny
COUNTY TOTAL		2008	12	58	25.2	2	0.9	0	0	0	2	56	24.3	0	20	34	2	3	1
Population:	2,250	2009	12	59	26.2	3	1.3	0	0	0	3	56	24.9	0	16	36	4	13	4
Percent of Change				1.7%	4.0%	50.0%	46.7%				50.0%	0.0%	2.2%		-20.0%	5.9%	100.0%	333.3%	300.0%

GRANT CO. S.O.		2008	12	1,575	38.0	80	1.9	3	8	17	52	1,495	36.1	15	529	817	134	178	24
Population:	41,850	2009	12	1,521	36.3	103	2.5	8	12	29	54	1,418	33.9	14	486	753	165	185	29
Percent of Change				-3.4%	-4.5%	28.8%	27.4%	166.7%	50.0%	70.6%	3.8%	-5.2%	-6.2%	-6.7%	-8.1%	-7.8%	23.1%	3.9%	20.8%
COULEE CITY P.D.		2008	12	17	28.3	4	6.7	1	1	0	2	13	21.7	0	4	7	2	4	2
Population:	600	2009	12	6	10.0	1	1.7	0	0	1	0	5	8.3	0	0	5	0	0	0
Percent of Change				-64.7%	-64.7%	-75.0%	-75.0%	-100.0%	-100.0%		-100.0%	-61.5%	-61.5%		-100.0%	-28.6%	-100.0%	-100.0%	-100.0%
EPHRATA P.D.		2008	12	606	85.8	24	3.4	0	2	11	11	582	82.4	6	164	390	22	48	19
Population:	7,110	2009	12	552	77.6	20	2.8	1	0	8	11	532	74.8	2	124	382	24	50	20
Percent of Change				-8.9%	-9.5%	-16.7%	-17.2%		-100.0%	-27.3%	0.0%	-8.6%	-9.2%	-66.7%	-24.4%	-2.1%	9.1%	4.2%	5.3%
GRAND COULEE P.D.		2008	12	61	31.9	9	4.7	0	3	0	6	52	27.2	0	20	31	1	2	0
Population:	1,925	2009	12	68	35.3	10	5.2	0	1	0	9	58	30.1	0	19	39	0	1	0
Percent of Change				11.5%	10.9%	11.1%	10.5%		-66.7%		50.0%	11.5%	11.0%		-5.0%	25.8%	-100.0%	-50.0%	
MATTAWA P.D.		2008	0No Report From This Agency For This Period.....															
Population:	0	2009	0No Report From This Agency For This Period.....															
Percent of Change																			
MOSES LAKE P.D.		2008	12	1,846	100.8	103	5.6	2	10	23	68	1,743	95.2	4	338	1,316	85	484	104
Population:	18,930	2009	12	1,594	84.2	98	5.2	0	23	21	54	1,496	79.0	6	275	1,116	99	475	71
Percent of Change				-13.7%	-16.5%	-4.9%	-8.0%	-100.0%	130.0%	-8.7%	-20.6%	-14.2%	-17.0%	50.0%	-18.6%	-15.2%	16.5%	-1.9%	-31.7%
QUINCY P.D.		2008	12	262	46.0	13	2.3	0	5	1	7	249	43.7	0	56	179	14	47	15
Population:	6,030	2009	12	320	53.1	24	4.0	1	4	5	14	296	49.1	0	84	190	22	38	10
Percent of Change				22.1%	15.5%	84.6%	74.5%		-20.0%	400.0%	100.0%	18.9%	12.4%		50.0%	6.1%	57.1%	-19.1%	-33.3%
ROYAL CITY P.D.		2008	12	66	34.7	10	5.3	0	0	1	9	56	29.5	1	21	28	6	34	13
Population:	1,865	2009	12	83	44.5	9	4.8	0	1	0	8	74	39.7	0	27	40	7	23	12
Percent of Change				25.8%	28.1%	-10.0%	-8.3%			-100.0%	-11.1%	32.1%	34.6%	-100.0%	28.6%	42.9%	16.7%	-32.4%	-7.7%
SOAP LAKE P.D.		2008	12	72	40.8	17	9.6	0	0	1	16	55	31.2	0	20	34	1	35	2
Population:	1,790	2009	12	59	33.0	2	1.1	0	0	1	1	57	31.8	0	29	25	3	7	0
Percent of Change				-18.1%	-19.2%	-88.2%	-88.4%			0.0%	-93.8%	3.6%	2.2%		45.0%	-26.5%	200.0%	-80.0%	-100.0%
WARDEN P.D.		2008	0No Report From This Agency For This Period.....															
Population:	0	2009	0No Report From This Agency For This Period.....															
Percent of Change																			

NOTE: Those agencies reporting less than 12 months of data for either year will not show the "Percent of Change"

Table 7
Part 1 Crimes and Clearance Reported
By Agency, County, Offense
Rate per 1,000 Population and Percent of Change
2008 - 2009

CAUTION: The populations of non-reporting agencies are shown as zero.

	Year	Months Reported	Crime Index Offenses		Violent Crime				Property Crime					Motor Vehicle Theft	Total Cleared	Juvenile Cleared				
			Total	Rate per 1,000	Total	Rate per 1,000	Murder	Rape	Robbery	Agg. Assault	Total	Rate per 1,000	Arson				Burglary	Larceny		
COUNTY TOTAL	2008	96	4,505	57.3	260	3.2	6	29	54	171	4,245	54.0	26	1,152	2,802	265	832	179		
Population:	80,100	2009	4,203	52.5	267	3.4	10	41	65	151	3,936	49.1	22	1,044	2,550	320	779	142		
Percent of Change			-6.7%	-8.4%	2.7%	4.6%	66.7%	41.4%	20.4%	-11.7%	-7.3%	-9.0%	-15.4%	-9.4%	-9.0%	20.8%	-6.4%	-20.7%		

GRAYS HARBOR CO. S.O.	2008	12	403	14.5	32	1.1	2	4	4	22	371	13.3	1	138	192	40	164	17		
Population:	28,205	2009	362	12.8	33	1.2	0	2	7	24	329	11.7	2	104	195	28	127	9		
Percent of Change			-10.2%	-11.2%	3.1%	1.9%	-100.0%	-50.0%	75.0%	9.1%	-11.3%	-12.4%	100.0%	-24.6%	1.6%	-30.0%	-22.6%	-47.1%		
ABERDEEN P.D.	2008	12	1,034	62.8	39	2.4	0	4	12	23	995	60.4	5	174	744	72	260	27		
Population:	16,440	2009	1,083	65.9	68	4.1	0	6	28	34	1,015	61.7	5	198	734	78	353	32		
Percent of Change			4.7%	4.9%	74.4%	74.6%		50.0%	133.3%	47.8%	2.0%	2.1%	0.0%	13.8%	-1.3%	8.3%	35.8%	18.5%		
CHEHALIS TRIBAL P.D.	2008	0	No Report From This Agency For This Period																	
Population:	0	2009	0	No Report From This Agency For This Period																
Percent of Change																				
COSMOPOLIS P.D.	2008	12	23	13.9	1	0.6	0	1	0	0	22	13.3	1	5	15	1	11	2		
Population:	1,640	2009	32	19.5	1	0.6	0	1	0	0	31	18.9	0	10	16	5	7	2		
Percent of Change			39.1%	40.0%	0.0%	0.6%		0.0%			40.9%	41.8%	-100.0%	100.0%	6.7%	400.0%	-36.4%	0.0%		
ELMA P.D.	2008	12	226	72.3	12	3.8	0	0	2	10	214	68.5	1	50	154	9	40	10		
Population:	3,110	2009	180	57.9	11	3.5	0	2	3	6	169	54.3	0	38	113	18	33	9		
Percent of Change			-20.4%	-20.0%	-8.3%	-7.9%			50.0%	-40.0%	-21.0%	-20.6%	-100.0%	-24.0%	-26.6%	100.0%	-17.5%	-10.0%		
HOQUIAM P.D.	2008	12	416	47.3	20	2.3	0	1	3	16	396	45.0	2	71	305	18	56	16		
Population:	9,765	2009	500	51.2	24	2.5	0	5	11	8	476	48.7	7	111	332	26	45	11		
Percent of Change			20.2%	8.3%	20.0%	8.1%		400.0%	266.7%	-50.0%	20.2%	8.3%	250.0%	56.3%	8.9%	44.4%	-19.6%	-31.3%		
MC CLEARY P.D.	2008	12	28	18.0	3	1.9	0	0	0	3	25	16.1	0	9	16	0	3	1		
Population:	1,555	2009	43	27.7	5	3.2	0	0	0	5	38	24.4	0	12	20	6	5	1		
Percent of Change			53.6%	53.6%	66.7%	66.7%				66.7%	52.0%	52.0%		33.3%	25.0%		66.7%	0.0%		
MONTESANO P.D.	2008	12	128	35.9	0	0.0	0	0	0	0	128	35.9	0	21	105	2	38	13		
Population:	3,565	2009	89	25.0	3	0.8	0	0	0	3	86	24.1	6	19	58	3	26	8		
Percent of Change			-30.5%	-30.5%							-32.8%	-32.8%		-9.5%	-44.8%	50.0%	-31.6%	-38.5%		
OAKVILLE P.D.	2008	12	15	20.8	0	0.0	0	0	0	0	15	20.8	0	7	5	3	4	3		
Population:	715	2009	10	14.0	0	0.0	0	0	0	0	10	14.0	0	3	6	1	4	2		
Percent of Change			-33.3%	-32.9%							-33.3%	-32.9%		-57.1%	20.0%	-66.7%	0.0%	-33.3%		
OCEAN SHORES P.D.	2008	12	125	26.0	5	1.0	0	2	1	2	120	25.0	0	40	77	3	21	5		
Population:	4,860	2009	166	34.2	10	2.1	0	3	2	5	156	32.1	0	50	102	4	38	7		
Percent of Change			32.8%	31.3%	100.0%	97.7%		50.0%	100.0%	150.0%	30.0%	28.5%		25.0%	32.5%	33.3%	81.0%	40.0%		

NOTE: Those agencies reporting less than 12 months of data for either year will not show the "Percent of Change"

Table 7
Part 1 Crimes and Clearance Reported
By Agency, County, Offense
Rate per 1,000 Population and Percent of Change
2008 - 2009

CAUTION: The populations of non-reporting agencies are shown as zero.

	Year	Months Reported	Crime Index Offenses		Violent Crime			Property Crime					Motor Vehicle Theft	Total Cleared	Juvenile Cleared					
			Total	Rate per 1,000	Total	Rate per 1,000	Murder	Rape	Robbery	Agg. Assault	Total	Rate per 1,000				Arson	Burglary	Larceny		
QUINAULT TRIBAL P.D.	2008	0	No Report From This Agency For This Period.....																	
Population:	0	2009	0	No Report From This Agency For This Period.....																
Percent of Change																				
WESTPORT P.D.	2008	12	107	45.4	8	3.4	0	0	4	4	99	42.0	0	36	60	3	15	3		
Population:	2,345	2009	115	49.0	6	2.6	0	3	1	2	109	46.5	1	21	85	2	4	0		
Percent of Change			7.5%	7.9%	-25.0%	-24.7%			-75.0%	-50.0%	10.1%	10.6%		-41.7%	41.7%	-33.3%	-73.3%	-100.0%		
COUNTY TOTAL	2008	120	2,505	35.3	120	1.7	2	12	26	80	2,385	33.6	10	551	1,673	151	612	97		
Population:	72,200	2009	2,580	35.7	161	2.3	0	22	52	87	2,419	33.5	21	566	1,661	171	642	81		
Percent of Change			3.0%	1.1%	34.2%	36.6%	-100.0%	83.3%	100.0%	8.8%	1.4%	-0.4%	110.0%	2.7%	-0.7%	13.2%	4.9%	-16.5%		

ISLAND CO. S.O.	2008	12	1,171	22.0	39	0.7	0	13	4	22	1,132	21.2	1	456	644	31	77	17		
Population:	53,930	2009	811	15.0	33	0.6	0	8	3	22	778	14.4	3	291	455	29	71	13		
Percent of Change			-30.7%	-31.5%	-15.4%	-16.3%		-38.5%	-25.0%	0.0%	-31.3%	-32.0%	200.0%	-36.2%	-29.3%	-6.5%	-7.8%	-23.5%		
COUPEVILLE P.D.	2008	12	72	37.6	5	2.6	0	1	2	2	67	35.0	0	23	40	4	16	5		
Population:	1,910	2009	87	45.5	7	3.7	0	1	0	6	80	41.9	0	36	41	3	30	5		
Percent of Change			20.8%	21.1%	40.0%	40.4%		0.0%	-100.0%	200.0%	19.4%	19.7%		56.5%	2.5%	-25.0%	87.5%	0.0%		
LANGLEY P.D.	2008	12	71	65.7	0	0.0	0	0	0	0	71	65.7	0	32	34	5	0	0		
Population:	1,100	2009	44	40.0	2	1.8	0	0	2	0	42	38.2	1	11	30	0	0	0		
Percent of Change			-38.0%	-39.2%							-40.8%	-41.9%		-65.6%	-11.8%	-100.0%				
OAK HARBOR P.D.	2008	12	614	26.7	52	2.3	0	23	3	26	562	24.5	6	123	396	37	233	52		
Population:	23,360	2009	646	27.7	55	2.4	0	8	6	41	591	25.3	8	118	447	18	164	50		
Percent of Change			5.2%	3.5%	5.8%	4.0%		-65.2%	100.0%	57.7%	5.2%	3.4%	33.3%	-4.1%	12.9%	-51.4%	-29.6%	-3.8%		
COUNTY TOTAL	2008	48	1,928	24.3	96	1.2	0	37	9	50	1,832	23.1	7	634	1,114	77	326	74		
Population:	80,300	2009	1,588	19.8	97	1.2	0	17	11	69	1,491	18.6	12	456	973	50	265	68		
Percent of Change			-17.6%	-18.7%	1.0%	2.3%		-54.1%	22.2%	38.0%	-18.6%	-19.6%	71.4%	-28.1%	-12.7%	-35.1%	-18.7%	-8.1%		

JEFFERSON CO. S.O.	2008	12	466	23.4	34	1.7	0	7	0	27	432	21.7	1	164	255	12	65	5		
Population:	20,105	2009	368	18.3	39	1.9	2	3	1	33	329	16.4	5	83	235	6	67	7		
Percent of Change			-21.0%	-21.9%	14.7%	13.4%		-57.1%		22.2%	-23.8%	-24.7%	400.0%	-49.4%	-7.8%	-50.0%	3.1%	40.0%		
PORT TOWNSEND P.D.	2008	12	400	44.8	18	2.0	0	1	0	17	382	42.8	4	70	301	7	84	28		
Population:	8,895	2009	342	38.4	16	1.8	0	0	4	12	326	36.6	0	73	243	10	61	16		
Percent of Change			-14.5%	-14.2%	-11.1%	-10.8%		-100.0%		-29.4%	-14.7%	-14.4%	-100.0%	4.3%	-19.3%	42.9%	-27.4%	-42.9%		
COUNTY TOTAL	2008	24	866	30.1	52	1.8	0	8	0	44	814	28.3	5	234	556	19	149	33		
Population:	29,000	2009	710	24.5	55	1.9	2	3	5	45	655	22.6	5	156	478	16	128	23		
Percent of Change			-18.0%	-18.6%	5.8%	6.5%		-62.5%		2.3%	-19.5%	-20.1%	0.0%	-33.3%	-14.0%	-15.8%	-14.1%	-30.3%		

*The accuracy of Island County Sheriff's Office data for 2009 is in question due to problems associated with data system conversion.

NOTE: Those agencies reporting less than 12 months of data for either year will not show the "Percent of Change"

Table 7
Part 1 Crimes and Clearance Reported
By Agency, County, Offense
Rate per 1,000 Population and Percent of Change
2008 - 2009

CAUTION: The populations of non-reporting agencies are shown as zero.

		Months Year Reported	Crime Index Offenses		Violent Crime				Property Crime					Motor Vehicle Theft	Total Cleared	Juvenile Cleared			
			Total	Rate per 1,000	Total	Rate per 1,000	Murder	Rape	Robbery	Agg. Assault	Total	Rate per 1,000	Arson				Burglary	Larceny	
KING CO. S.O.		2008	12	7,693	22.5	549	1.6	8	107	181	253	7,144	20.9	104	2,407	3,729	904	606	8
Population:	343,705	2009	12	7,143	20.8	572	1.7	6	100	167	299	6,571	19.1	128	2,305	3,386	752	549	16
Percent of Change				-7.1%	-7.7%	4.2%	3.6%	-25.0%	-6.5%	-7.7%	18.2%	-8.0%	-8.6%	23.1%	-4.2%	-9.2%	-16.8%	-9.4%	100.0%
ALGONA P.D.		2008	12	56	20.4	12	4.4	0	1	1	10	44	16.1	0	15	24	5	49	3
Population:	2,760	2009	12	36	13.0	12	4.3	0	3	0	9	24	8.7	0	3	16	5	33	0
Percent of Change				-35.7%	-36.2%	0.0%	-0.7%		200.0%	-100.0%	-10.0%	-45.5%	-45.8%		-80.0%	-33.3%	0.0%	-32.7%	-100.0%
AUBURN P.D.		2008	12	3,911	58.4	275	4.1	0	14	102	159	3,636	54.3	23	630	2,343	640	792	222
Population:	67,485	2009	12	3,613	53.5	274	4.1	4	13	92	165	3,339	49.5	18	590	2,362	369	831	148
Percent of Change				-7.6%	-8.3%	-0.4%	-1.1%		-7.1%	-9.8%	3.8%	-8.2%	-8.8%	-21.7%	-6.3%	0.8%	-42.3%	4.9%	-33.3%
BELLEVUE P.D.		2008	12	4,478	37.6	167	1.4	0	33	71	63	4,311	36.2	23	687	3,327	274	922	152
Population:	120,600	2009	12	4,128	34.2	162	1.3	2	25	61	74	3,966	32.9	16	621	3,150	179	923	145
Percent of Change				-7.8%	-8.9%	-3.0%	-4.1%		-24.2%	-14.1%	17.5%	-8.0%	-9.1%	-30.4%	-9.6%	-5.3%	-34.7%	0.1%	-4.6%
BLACK DIAMOND P.D.		2008	12	71	17.1	14	3.4	0	1	0	13	57	13.7	0	20	32	5	24	7
Population:	4,180	2009	12	66	15.8	10	2.4	0	1	0	9	56	13.4	0	15	35	6	23	2
Percent of Change				-7.0%	-7.6%	-28.6%	-29.0%		0.0%		-30.8%	-1.8%	-2.3%		-25.0%	9.4%	20.0%	-4.2%	-71.4%
BOTHELL P.D.		2008	12	885	26.9	37	1.1	0	1	19	17	848	25.8	5	156	591	96	164	52
Population:	33,240	2009	12	924	27.8	33	1.0	0	3	17	13	891	26.8	7	169	649	66	110	20
Percent of Change				4.4%	3.2%	-10.8%	-11.8%		200.0%	-10.5%	-23.5%	5.1%	3.9%	40.0%	8.3%	9.8%	-31.3%	-32.9%	-61.5%
BURIEN P.D.		2008	12	1,678	53.2	189	6.0	4	28	71	86	1,489	47.2	12	380	844	253	244	4
Population:	31,890	2009	12	1,715	53.8	167	5.2	2	13	62	90	1,548	48.5	12	352	957	227	186	2
Percent of Change				2.2%	1.1%	-11.6%	-12.6%	-50.0%	-53.6%	-12.7%	4.7%	4.0%	2.8%	0.0%	-7.4%	13.4%	-10.3%	-23.8%	-50.0%
CARNATION P.D.		2008	12	27	14.2	2	1.0	0	1	1	0	25	13.1	0	10	15	0	4	1
Population:	1,910	2009	12	30	15.7	0	0.0	0	0	0	0	30	15.7	1	2	25	2	0	0
Percent of Change				11.1%	10.8%	-100.0%	-100.0%		-100.0%	-100.0%		20.0%	19.7%		-80.0%	66.7%		-100.0%	-100.0%
CLYDE HILL P.D.		2008	12	40	14.3	4	1.4	0	0	0	4	36	12.8	1	15	18	2	4	3
Population:	2,815	2009	12	35	12.4	4	1.4	0	0	0	4	31	11.0	0	3	23	5	7	2
Percent of Change				-12.5%	-12.8%	0.0%	-0.4%				0.0%	-13.9%	-14.2%	-100.0%	-80.0%	27.8%	150.0%	75.0%	-33.3%
COVINGTON P.D.		2008	12	610	35.1	39	2.2	0	6	23	10	571	32.9	17	128	356	70	66	7
Population:	17,530	2009	12	679	38.7	37	2.1	0	4	15	18	642	36.6	1	134	467	40	49	0
Percent of Change				11.3%	10.2%	-5.1%	-6.0%		-33.3%	-34.8%	80.0%	12.4%	11.3%	-94.1%	4.7%	31.2%	-42.9%	-25.8%	-100.0%
DES MOINES P.D.		2008	12	1,200	41.1	116	4.0	1	14	59	42	1,084	37.1	4	255	616	209	209	29
Population:	29,270	2009	12	1,036	35.4	113	3.9	0	18	48	47	923	31.5	8	229	525	161	182	29
Percent of Change				-13.7%	-13.9%	-2.6%	-2.9%	-100.0%	28.6%	-18.6%	11.9%	-14.9%	-15.1%	100.0%	-10.2%	-14.8%	-23.0%	-12.9%	0.0%

NOTE: Those agencies reporting less than 12 months of data for either year will not show the "Percent of Change"

Table 7
Part 1 Crimes and Clearance Reported
By Agency, County, Offense
Rate per 1,000 Population and Percent of Change
2008 - 2009

CAUTION: The populations of non-reporting agencies are shown as zero.

		Months Year Reported	Crime Index Offenses		Violent Crime				Property Crime					Motor Vehicle Theft	Total Cleared	Juvenile Cleared			
			Total	Rate per 1,000	Total	Rate per 1,000	Murder	Rape	Robbery	Agg. Assault	Total	Rate per 1,000	Arson				Burglary	Larceny	
DUVALL P.D.		2008	12	34	5.7	0	0.0	0	0	0	0	34	5.7	1	6	27	0	0	0
Population:	5,980	2009	12	53	8.9	3	0.5	0	3	0	0	50	8.4	0	15	35	0	0	0
Percent of Change				55.9%	54.4%							47.1%	45.7%	-100.0%	150.0%	29.6%			
ENUMCLAW P.D.		2008	12	278	24.2	2	0.2	0	0	1	1	276	24.1	2	39	210	25	34	4
Population:	11,460	2009	12	278	24.3	9	0.8	0	2	1	6	269	23.5	2	42	213	12	47	16
Percent of Change				0.0%	0.1%	350.0%	350.4%			0.0%	500.0%	-2.5%	-2.5%	0.0%	7.7%	1.4%	-52.0%	38.2%	300.0%
FEDERAL WAY P.D.		2008	12	4,885	55.5	323	3.7	8	30	170	115	4,562	51.8	13	800	2,933	816	816	197
Population:	88,580	2009	12	4,915	55.5	369	4.2	5	51	198	115	4,546	51.3	13	741	3,231	561	933	153
Percent of Change				0.6%	0.0%	14.2%	13.5%	-37.5%	70.0%	16.5%	0.0%	-0.4%	-1.0%	0.0%	-7.4%	10.2%	-31.3%	14.3%	-22.3%
ISSAQUAH P.D.		2008	12	834	31.7	17	0.6	1	1	6	9	817	31.0	3	103	638	73	94	16
Population:	26,890	2009	12	653	24.3	19	0.7	0	4	9	6	634	23.6	1	51	531	51	82	16
Percent of Change				-21.7%	-23.4%	11.8%	9.4%	-100.0%	300.0%	50.0%	-33.3%	-22.4%	-24.0%	-66.7%	-50.5%	-16.8%	-30.1%	-12.8%	0.0%
KENT P.D.		2008	12	5,210	59.9	538	6.2	2	79	171	286	4,672	53.7	23	1,112	2,702	835	918	150
Population:	88,380	2009	12	4,342	49.1	507	5.7	1	82	180	244	3,835	43.4	15	828	2,381	611	966	159
Percent of Change				-16.7%	-18.0%	-5.8%	-7.3%	-50.0%	3.8%	5.3%	-14.7%	-17.9%	-19.2%	-34.8%	-25.5%	-11.9%	-26.8%	5.2%	6.0%
KENMORE P.D.		2008	12	360	17.8	38	1.9	1	7	8	22	322	15.9	3	89	203	27	29	0
Population:	20,450	2009	12	431	21.1	22	1.1	0	1	3	18	409	20.0	5	131	229	44	21	0
Percent of Change				19.7%	18.4%	-42.1%	-42.8%	-100.0%	-85.7%	-62.5%	-18.2%	27.0%	25.6%	66.7%	47.2%	12.8%	63.0%	-27.6%	
KIRKLAND P.D.		2008	12	2,041	42.2	97	2.0	0	11	35	51	1,944	40.2	16	255	1,499	174	226	28
Population:	49,010	2009	12	1,708	34.9	59	1.2	0	8	22	29	1,649	33.6	9	256	1,286	98	234	34
Percent of Change				-16.3%	-17.3%	-39.2%	-39.9%		-27.3%	-37.1%	-43.1%	-15.2%	-16.2%	-43.8%	0.4%	-14.2%	-43.7%	3.5%	21.4%
LAKE FOREST PARK P.D.		2008	12	286	22.3	11	0.9	0	0	4	7	275	21.5	0	60	194	21	26	5
Population:	12,820	2009	12	247	19.3	9	0.7	0	2	2	5	238	18.6	0	78	143	17	28	2
Percent of Change				-13.6%	-13.7%	-18.2%	-18.2%			-50.0%	-28.6%	-13.5%	-13.5%		30.0%	-26.3%	-19.0%	7.7%	-60.0%
MAPLE VALLEY P.D.		2008	12	386	18.8	20	1.0	0	4	4	12	366	17.9	11	99	223	33	37	4
Population:	20,840	2009	12	466	22.4	24	1.2	0	2	6	16	442	21.2	6	129	278	29	29	2
Percent of Change				20.7%	18.6%	20.0%	17.9%		-50.0%	50.0%	33.3%	20.8%	18.7%	-45.5%	30.3%	24.7%	-12.1%	-21.6%	-50.0%
MEDINA P.D.		2008	12	83	24.2	1	0.3	0	0	0	1	82	23.9	0	11	61	10	9	0
Population:	3,435	2009	12	69	20.1	0	0.0	0	0	0	0	69	20.1	0	11	53	5	4	0
Percent of Change				-16.9%	-17.0%	-100.0%	-100.0%				-100.0%	-15.9%	-16.0%		0.0%	-13.1%	-50.0%	-55.6%	
MERCER ISLAND P.D.		2008	12	436	19.2	13	0.6	0	0	3	10	423	18.7	4	79	310	30	33	7
Population:	22,720	2009	12	429	18.9	11	0.5	0	2	2	7	418	18.4	7	74	323	14	34	7
Percent of Change				-1.6%	-1.9%	-15.4%	-15.6%			-33.3%	-30.0%	-1.2%	-1.5%	75.0%	-6.3%	4.2%	-53.3%	3.0%	0.0%

NOTE: Those agencies reporting less than 12 months of data for either year will not show the "Percent of Change"

Table 7
Part 1 Crimes and Clearance Reported
By Agency, County, Offense
Rate per 1,000 Population and Percent of Change
2008 - 2009

CAUTION: The populations of non-reporting agencies are shown as zero.

	Year	Months Reported	Crime Index Offenses		Violent Crime				Property Crime					Motor Vehicle Theft	Total Cleared	Juvenile Cleared			
			Total	Rate per 1,000	Total	Rate per 1,000	Murder	Rape	Robbery	Agg. Assault	Total	Rate per 1,000	Arson				Burglary	Larceny	
NEWCASTLE P.D.	2008	12	213	21.9	6	0.6	0	1	2	3	207	21.3	5	50	126	26	15	0	
Population:	9,925	2009	227	22.9	3	0.3	0	0	0	3	224	22.6	0	54	147	23	9	0	
Percent of Change			6.6%	4.4%	-50.0%	-51.0%		-100.0%	-100.0%	0.0%	8.2%	6.0%	-100.0%	8.0%	16.7%	-11.5%	-40.0%		
NORTH BEND P.D.	2008	12	168	35.7	15	3.2	0	5	4	6	153	32.5	1	26	118	8	24	0	
Population:	4,760	2009	247	51.9	10	2.1	0	0	4	6	237	49.8	5	47	170	15	15	0	
Percent of Change			47.0%	45.5%	-33.3%	-34.0%		-100.0%	0.0%	0.0%	54.9%	53.3%	400.0%	80.8%	44.1%	87.5%	-37.5%		
NORMANDY PARK P.D.	2008	12	169	26.3	3	0.5	0	0	2	1	166	25.8	1	58	102	5	19	7	
Population:	6,485	2009	141	21.7	2	0.3	0	0	1	1	139	21.4	0	47	88	4	20	3	
Percent of Change			-16.6%	-17.3%	-33.3%	-34.0%			-50.0%	0.0%	-16.3%	-17.0%	-100.0%	-19.0%	-13.7%	-20.0%	5.3%	-57.1%	
PACIFIC P.D.	2008	12	159	25.5	13	2.1	1	1	4	7	146	23.5	2	37	74	33	41	6	
Population:	6,290	2009	160	25.4	13	2.1	0	3	0	10	147	23.4	1	51	72	23	38	9	
Percent of Change			0.6%	-0.4%	0.0%	-1.0%	-100.0%	200.0%	-100.0%	42.9%	0.7%	-0.4%	-50.0%	37.8%	-2.7%	-30.3%	-7.3%	50.0%	
PORT OF SEATTLE P.D.	2008	12	1,054	---	11	---	0	1	2	8	1,043	---	9	50	843	141	51	2	
Population:	0	2009	734	---	30	---	0	1	1	28	704	---	2	21	627	54	41	3	
Percent of Change																			
REDMOND P.D.	2008	12	1,751	34.1	65	1.3	2	17	20	26	1,686	32.9	5	175	1,420	86	273	53	
Population:	51,890	2009	1,714	33.0	58	1.1	0	9	23	26	1,656	31.9	3	206	1,382	65	349	32	
Percent of Change			-2.1%	-3.2%	-10.8%	-11.7%	-100.0%	-47.1%	15.0%	0.0%	-1.8%	-2.9%	-40.0%	17.7%	-2.7%	-24.4%	27.8%	-39.6%	
RENTON P.D.	2008	0	No Report From This Agency For This Period																
Population:	83,650	2009	4,643	55.5	314	3.8	2	32	152	128	4,329	51.8	7	800	3,041	481	867	180	
Percent of Change																			
SAMMAMISH P.D.	2008	12	444	10.9	18	0.4	0	6	3	9	426	10.5	4	103	307	12	23	1	
Population:	40,670	2009	366	9.0	11	0.3	0	5	2	4	355	8.7	6	69	263	17	24	1	
Percent of Change			-17.6%	-17.6%	-38.9%	-38.9%		-16.7%	-33.3%	-55.6%	-16.7%	-16.7%	50.0%	-33.0%	-14.3%	41.7%	4.3%	0.0%	
SEATAC P.D.	2008	12	1,675	65.1	159	6.2	1	16	79	63	1,516	58.9	3	406	805	302	169	0	
Population:	25,730	2009	1,602	62.3	134	5.2	2	20	49	63	1,468	57.1	13	338	847	270	108	1	
Percent of Change			-4.4%	-4.4%	-15.7%	-15.8%	100.0%	25.0%	-38.0%	0.0%	-3.2%	-3.2%	333.3%	-16.7%	5.2%	-10.6%	-36.1%		
SEATTLE P.D.	2008	12	36,346	61.3	3,447	5.8	29	126	1,612	1,680	32,899	55.5	79	6,503	22,642	3,675	1,328	322	
Population:	602,000	2009	39,107	65.0	3,861	6.4	22	102	1,792	1,945	35,246	58.5	156	6,709	25,095	3,286	5,005	536	
Percent of Change			7.6%	6.0%	12.0%	10.3%	-24.1%	-19.0%	11.2%	15.8%	7.1%	5.5%	97.5%	3.2%	10.8%	-10.6%	276.9%	66.5%	
SHORELINE P.D.	2008	12	1,787	33.4	97	1.8	0	13	45	39	1,690	31.6	17	362	1,131	180	282	1	
Population:	54,320	2009	1,716	31.6	92	1.7	0	13	34	45	1,624	29.9	18	395	1,104	107	199	1	
Percent of Change			-4.0%	-5.5%	-5.2%	-6.7%		0.0%	-24.4%	15.4%	-3.9%	-5.5%	5.9%	9.1%	-2.4%	-40.6%	-29.4%	0.0%	

NOTE: Those agencies reporting less than 12 months of data for either year will not show the "Percent of Change"

Table 7
Part 1 Crimes and Clearance Reported
By Agency, County, Offense
Rate per 1,000 Population and Percent of Change
2008 - 2009

CAUTION: The populations of non-reporting agencies are shown as zero.

	Year	Months Reported	Crime Index Offenses		Violent Crime				Property Crime					Motor Vehicle Theft	Total Cleared	Juvenile Cleared			
			Total	Rate per 1,000	Total	Rate per 1,000	Murder	Rape	Robbery	Agg. Assault	Total	Rate per 1,000	Arson				Burglary	Larceny	
SNOQUALMIE P.D.	2008	12	119	12.7	3	0.3	0	1	0	2	116	12.4	0	19	89	8	6	0	
Population:	9,730	2009	168	17.3	9	0.9	0	2	0	7	159	16.3	7	11	131	10	25	5	
Percent of Change			41.2%	35.8%	200.0%	188.6%		100.0%		250.0%	37.1%	31.9%		-42.1%	47.2%	25.0%	316.7%		
TUKWILA P.D.	2008	12	3,014	166.7	180	10.0	6	15	91	68	2,834	156.7	13	374	2,038	409	735	242	
Population:	18,170	2009	3,443	189.5	165	9.1	1	19	88	57	3,278	180.4	11	327	2,584	356	911	235	
Percent of Change			14.2%	13.7%	-8.3%	-8.8%	-83.3%	26.7%	-3.3%	-16.2%	15.7%	15.1%	-15.4%	-12.6%	26.8%	-13.0%	23.9%	-2.9%	
UNIV. OF WASH. P.D.	2008	12	565	---	15	---	0	1	9	5	550	---	1	84	446	19	16	1	
Population:	0	2009	582	---	17	---	0	0	10	7	565	---	2	82	471	10	19	2	
Percent of Change																			
WOODINVILLE P.D.	2008	12	478	45.3	17	1.6	0	3	5	9	461	43.7	7	94	332	28	40	1	
Population:	10,670	2009	458	42.9	8	0.7	0	2	1	5	450	42.2	2	105	312	31	49	1	
Percent of Change			-4.2%	-5.2%	-52.9%	-53.4%		-33.3%	-80.0%	-44.4%	-2.4%	-3.4%	-71.4%	11.7%	-6.0%	10.7%	22.5%	0.0%	
YARROW POINT P.D.	2008	12	9	9.3	0	0.0	0	0	0	0	9	9.3	0	0	8	1	4	0	
Population:	965	2009	11	11.4	1	1.0	0	0	0	1	10	10.4	0	2	6	2	1	0	
Percent of Change			22.2%	22.9%							11.1%	11.7%			-25.0%	100.0%	-75.0%		
COUNTY TOTAL	2008	444	83,433	45.7	6,513	3.4	64	544	2,808	3,097	76,920	42.1	412	15,697	51,376	9,435	8,332	1,535	
Population:	1,931,205	2009	88,315	45.7	7,144	3.9	47	545	3,042	3,510	81,171	42.0	482	16,043	56,638	8,008	12,951	1,762	
Percent of Change			5.9%	0.1%	9.7%	15.9%	-26.6%	0.2%	8.3%	13.3%	5.5%	-0.2%	17.0%	2.2%	10.2%	-15.1%	55.4%	14.8%	

KITSAP CO. S.O.	2008	12	4,463	26.2	674	4.0	2	123	44	505	3,789	22.2	29	1,045	2,538	177	1,402	352	
Population:	170,395	2009	3,949	23.2	682	4.0	4	103	48	527	3,267	19.2	38	881	2,145	203	1,338	314	
Percent of Change			-11.5%	-11.5%	1.2%	1.2%	100.0%	-16.3%	9.1%	4.4%	-13.8%	-13.7%	31.0%	-15.7%	-15.5%	14.7%	-4.6%	-10.8%	
BAINBRIDGE ISLAND P.D.	2008	12	353	15.2	29	1.3	0	4	6	19	324	14.0	7	77	233	7	98	31	
Population:	23,290	2009	335	14.4	31	1.3	0	4	4	23	304	13.1	2	80	210	12	74	19	
Percent of Change			-5.1%	-5.5%	6.9%	6.4%		0.0%	-33.3%	21.1%	-6.2%	-6.6%	-71.4%	3.9%	-9.9%	71.4%	-24.5%	-38.7%	
BREMERTON P.D.	2008	12	1,892	51.3	308	8.4	1	52	53	202	1,584	43.0	20	383	1,076	105	539	75	
Population:	36,620	2009	1,968	53.7	250	6.8	0	46	46	158	1,718	46.9	22	362	1,222	112	461	75	
Percent of Change			4.0%	4.7%	-18.8%	-18.3%	-100.0%	-11.5%	-13.2%	-21.8%	8.5%	9.2%	10.0%	-5.5%	13.6%	6.7%	-14.5%	0.0%	
PORT GAMBLE S'KLALLAM TRIBAL	2008	0No Report From This Agency For This Period.....																
Population:	0	2009No Report From This Agency For This Period.....																
Percent of Change																			
PORT ORCHARD P.D.	2008	12	515	61.2	50	5.9	2	9	6	33	465	55.2	4	127	312	22	129	39	
Population:	8,440	2009	616	73.0	52	6.2	0	5	3	44	564	66.8	4	113	429	18	186	57	
Percent of Change			19.6%	19.3%	4.0%	3.8%	-100.0%	-44.4%	-50.0%	33.3%	21.3%	21.0%	0.0%	-11.0%	37.5%	-18.2%	44.2%	46.2%	

NOTE: Those agencies reporting less than 12 months of data for either year will not show the "Percent of Change"

Table 7
Part 1 Crimes and Clearance Reported
By Agency, County, Offense
Rate per 1,000 Population and Percent of Change
2008 - 2009

CAUTION: The populations of non-reporting agencies are shown as zero.

	Year	Months Reported	Crime Index Offenses		Violent Crime				Property Crime				Motor Vehicle Theft	Total Cleared	Juvenile Cleared			
			Total	Rate per 1,000	Total	Rate per 1,000	Murder	Rape	Robbery	Agg. Assault	Total	Rate per 1,000				Arson	Burglary	Larceny
POULSBO P.D.	2008	12	345	44.0	42	5.4	0	7	3	32	303	38.6	0	44	257	2	141	32
Population: 8,855	2009	12	362	40.9	45	5.1	0	8	6	31	317	35.8	2	54	260	1	199	45
Percent of Change			4.9%	-7.1%	7.1%	-5.1%		14.3%	100.0%	-3.1%	4.6%	-7.4%		22.7%	1.2%	-50.0%	41.1%	40.6%
SUQUAMISH TRIBAL P.D.	2008	0	No Report From This Agency For This Period															
Population: 0	2009	0	No Report From This Agency For This Period															
Percent of Change																		
COUNTY TOTAL	2008	60	7,568	30.7	1,103	4.5	5	195	112	791	6,465	26.2	60	1,676	4,416	313	2,309	529
Population: 247,600	2009	60	7,230	29.2	1,060	4.3	4	166	107	783	6,170	24.9	68	1,490	4,266	346	2,258	510
Percent of Change			-4.5%	-4.8%	-3.9%	-3.6%	-20.0%	-14.9%	-4.5%	-1.0%	-4.6%	-4.9%	13.3%	-11.1%	-3.4%	10.5%	-2.2%	-3.6%
KITTITAS CO. S.O.	2008	12	506	29.0	19	1.1	0	2	1	16	487	27.9	0	134	311	42	36	11
Population: 18,060	2009	12	555	30.7	15	0.8	0	3	1	11	540	29.9	3	157	346	34	27	3
Percent of Change			9.7%	6.1%	-21.1%	-23.7%		50.0%	0.0%	-31.3%	10.9%	7.2%		17.2%	11.3%	-19.0%	-25.0%	-72.7%
CENTRAL WASH UNIV P.D.	2008	12	158	---	2	---	0	2	0	0	156	---	0	42	112	2	3	0
Population: 0	2009	12	132	---	6	---	0	2	0	4	126	---	0	16	106	4	9	0
Percent of Change																		
CLE ELUM P.D.	2008	12	191	55.2	6	1.7	0	2	0	4	185	53.5	0	37	139	9	24	8
Population: 3,460	2009	12	153	44.2	3	0.9	0	1	0	2	150	43.4	0	32	106	12	15	2
Percent of Change			-19.9%	-19.9%	-50.0%	-50.0%		-50.0%		-50.0%	-18.9%	-18.9%		-13.5%	-23.7%	33.3%	-37.5%	-75.0%
ELLENSBURG P.D.	2008	12	1,024	59.1	47	2.7	0	21	1	25	977	56.4	7	184	740	46	230	68
Population: 17,230	2009	12	914	53.0	46	2.7	0	10	10	26	868	50.4	3	175	660	30	227	67
Percent of Change			-10.7%	-10.2%	-2.1%	-1.6%		-52.4%	900.0%	4.0%	-11.2%	-10.6%	-57.1%	-4.9%	-10.8%	-34.8%	-1.3%	-1.5%
KITTITAS P.D.	2008	12	65	56.8	2	1.7	0	1	1	0	63	55.0	0	15	46	2	6	2
Population: 1,150	2009	12	30	26.1	1	0.9	0	0	0	1	29	25.2	0	9	20	0	1	0
Percent of Change			-53.8%	-54.0%	-50.0%	-50.2%		-100.0%	-100.0%		-54.0%	-54.2%		-40.0%	-56.5%	-100.0%	-83.3%	-100.0%
COUNTY TOTAL	2008	60	1,944	49.3	76	1.9	0	28	3	45	1,868	47.4	7	412	1,348	101	299	89
Population: 39,900	2009	60	1,784	44.7	71	1.8	0	16	11	44	1,713	42.9	6	389	1,238	80	279	72
Percent of Change			-8.2%	-9.4%	-6.6%	-5.4%		-42.9%	266.7%	-2.2%	-8.3%	-9.4%	-14.3%	-5.6%	-8.2%	-20.8%	-6.7%	-19.1%
KLICKITAT CO. S.O.	2008	12	161	11.9	10	0.7	0	0	1	9	151	11.2	0	103	16	32	23	1
Population: 13,550	2009	12	156	11.5	7	0.5	1	0	0	6	149	11.0	3	104	8	34	14	1
Percent of Change			-3.1%	-3.5%	-30.0%	-30.3%			-100.0%	-33.3%	-1.3%	-1.8%		1.0%	-50.0%	6.3%	-39.1%	0.0%
BINGEN P.D.	2008	12	20	29.4	1	1.5	0	0	0	1	19	27.9	0	5	12	2	5	2
Population: 685	2009	12	43	62.8	2	2.9	0	0	0	2	41	59.9	0	22	13	6	1	0
Percent of Change			115.0%	113.4%	100.0%	98.5%				100.0%	115.8%	114.2%		340.0%	8.3%	200.0%	-80.0%	-100.0%

NOTE: Those agencies reporting less than 12 months of data for either year will not show the "Percent of Change"

Table 7
Part 1 Crimes and Clearance Reported
By Agency, County, Offense
Rate per 1,000 Population and Percent of Change
2008 - 2009

CAUTION: The populations of non-reporting agencies are shown as zero.

	Year	Months Reported	Crime Index Offenses		Violent Crime				Property Crime					Motor Vehicle Theft	Total Cleared	Juvenile Cleared			
			Total	Rate per 1,000	Total	Rate per 1,000	Murder	Rape	Robbery	Agg. Assault	Total	Rate per 1,000	Arson				Burglary	Larceny	
GOLDENDALE P.D.	2008	12	177	47.5	9	2.4	0	1	1	7	168	45.1	1	40	118	9	55	16	
Population:	3,745	2009	176	47.0	6	1.6	0	0	0	6	170	45.4	2	34	126	8	49	16	
Percent of Change			-0.6%	-1.1%	-33.3%	-33.7%		-100.0%	-100.0%	-14.3%	1.2%	0.7%	100.0%	-15.0%	6.8%	-11.1%	-10.9%	0.0%	
WHITE SALMON P.D.	2008	12	61	27.7	3	1.4	0	0	1	2	58	26.3	0	12	39	7	13	2	
Population:	2,220	2009	84	37.8	0	0.0	0	0	0	0	84	37.8	0	44	32	8	5	1	
Percent of Change			37.7%	36.8%	-100.0%	-100.0%			-100.0%	-100.0%	44.8%	43.8%		266.7%	-17.9%	14.3%	-61.5%	-50.0%	
COUNTY TOTAL	2008	48	419	20.8	23	1.1	0	1	3	19	396	19.7	1	160	185	50	96	21	
Population:	20,200	2009	459	22.7	15	0.7	1	0	0	14	444	22.0	5	204	179	56	69	18	
Percent of Change			9.5%	9.0%	-34.8%	-34.5%		-100.0%	-100.0%	-26.3%	12.1%	11.6%	400.0%	27.5%	-3.2%	12.0%	-28.1%	-14.3%	

LEWIS CO. S.O.	2008	12	929	20.5	70	1.5	0	14	3	53	859	18.9	8	264	528	59	249	22	
Population:	45,555	2009	782	17.2	59	1.3	1	9	3	46	723	15.9	7	261	413	42	180	27	
Percent of Change			-15.8%	-16.2%	-15.7%	-16.1%		-35.7%	0.0%	-13.2%	-15.8%	-16.2%	-12.5%	-1.1%	-21.8%	-28.8%	-27.7%	22.7%	
CENTRALIA P.D.	2008	12	1,144	73.6	107	6.9	1	13	23	70	1,037	66.7	8	162	789	78	208	35	
Population:	15,570	2009	864	55.5	82	5.3	0	17	14	51	782	50.2	15	151	550	66	143	28	
Percent of Change			-24.5%	-24.6%	-23.4%	-23.5%	-100.0%	30.8%	-39.1%	-27.1%	-24.6%	-24.7%	87.5%	-6.8%	-30.3%	-15.4%	-31.3%	-20.0%	
CHEHALIS P.D.	2008	12	664	92.0	17	2.4	0	4	5	8	647	89.7	5	78	537	27	191	34	
Population:	7,185	2009	583	81.1	11	1.5	0	3	2	6	572	79.6	2	65	474	31	235	29	
Percent of Change			-12.2%	-11.8%	-35.3%	-35.0%		-25.0%	-60.0%	-25.0%	-11.6%	-11.2%	-60.0%	-16.7%	-11.7%	14.8%	23.0%	-14.7%	
MORTON P.D.	2008	12	80	70.2	7	6.1	0	1	0	6	73	64.0	0	12	54	7	28	7	
Population:	1,140	2009	69	60.5	3	2.6	0	2	0	1	66	57.9	0	11	55	0	20	5	
Percent of Change			-13.8%	-13.8%	-57.1%	-57.1%		100.0%		-83.3%	-9.6%	-9.6%		-8.3%	1.9%	-100.0%	-28.6%	-28.6%	
MOSSYROCK P.D.	2008	0	No Report From This Agency For This Period																
Population:	695	2009	18	25.9	4	5.8	1	1	0	2	14	20.1	0	3	9	2	9	3	
Percent of Change																			
NAPAVINE P.D.	2008	7	28	17.4	0	0.0	0	0	0	0	28	17.4	1	3	22	2	4	1	
Population:	0	2009	No Report From This Agency For This Period																
Percent of Change																			
PE ELL P.D.	2008	12	8	11.9	0	0.0	0	0	0	0	8	11.9	0	2	6	0	0	0	
Population:	670	2009	24	35.8	6	9.0	0	0	0	6	18	26.9	0	6	10	2	14	0	
Percent of Change			200.0%	200.0%							125.0%	125.0%		200.0%	66.7%				
TOLEDO P.D.	2008	12	17	24.6	3	4.3	0	2	1	0	14	20.3	0	11	0	3	1	0	
Population:	695	2009	10	14.4	1	1.4	0	0	0	1	9	12.9	0	4	3	2	0	0	
Percent of Change			-41.2%	-41.6%	-66.7%	-66.9%		-100.0%	-100.0%		-35.7%	-36.2%		-63.6%		-33.3%	-100.0%		

NOTE: Those agencies reporting less than 12 months of data for either year will not show the "Percent of Change"

Table 7
Part 1 Crimes and Clearance Reported
By Agency, County, Offense
Rate per 1,000 Population and Percent of Change
2008 - 2009

CAUTION: The populations of non-reporting agencies are shown as zero.

	Year	Months Reported	Crime Index Offenses		Violent Crime				Property Crime					Motor Vehicle Theft	Total Cleared	Juvenile Cleared				
			Total	Rate per 1,000	Total	Rate per 1,000	Murder	Rape	Robbery	Agg. Assault	Total	Rate per 1,000	Arson				Burglary	Larceny		
VADER P.D.	2008	0	No Report From This Agency For This Period																	
Population:	0	2009	0	No Report From This Agency For This Period																
Percent of Change																				
WINLOCK P.D.	2008	12	41	30.1	0	0.0	0	0	0	0	41	30.1	0	8	28	5	10	3		
Population:	1,370	2009	36	26.3	3	2.2	0	2	1	0	33	24.1	0	11	19	3	7	0		
Percent of Change			-12.2%	-12.8%							-19.5%	-20.1%		37.5%	-32.1%	-40.0%	-30.0%	-100.0%		
COUNTY TOTAL	2008	91	2,911	39.6	204	2.8	1	34	32	137	2,707	36.8	22	540	1,964	181	691	102		
Population:	72,880	2009	2,386	32.7	169	2.3	2	34	20	113	2,217	30.4	24	512	1,533	148	608	92		
Percent of Change																				
LINCOLN CO. S.O.	2008	12	170	21.5	8	1.0	0	5	1	2	162	20.5	2	43	114	3	43	11		
Population:	7,965	2009	128	16.1	13	1.6	0	1	0	12	115	14.4	1	39	68	7	45	6		
Percent of Change			-24.7%	-25.2%	62.5%	61.4%		-80.0%	-100.0%	500.0%	-29.0%	-29.5%	-50.0%	-9.3%	-40.4%	133.3%	4.7%	-45.5%		
ODESSA P.D.	2008	12	18	18.8	5	5.2	0	0	0	5	13	13.5	0	6	7	0	3	0		
Population:	960	2009	29	30.2	3	3.1	0	0	0	3	26	27.1	0	14	11	1	2	0		
Percent of Change			61.1%	61.1%	-40.0%	-40.0%				-40.0%	100.0%	100.0%		133.3%	57.1%		-33.3%			
REARDAN P.D.	2008	12	10	15.9	0	0.0	0	0	0	0	10	15.9	0	5	5	0	0	0		
Population:	630	2009	3	4.8	0	0.0	0	0	0	0	3	4.8	0	1	2	0	2	1		
Percent of Change			-70.0%	-70.0%							-70.0%	-70.0%		-80.0%	-60.0%					
WILBUR P.D.	2008	12	13	14.4	1	1.1	0	0	0	1	12	13.3	0	2	10	0	3	0		
Population:	895	2009	7	7.8	1	1.1	0	0	0	1	6	6.7	0	2	4	0	3	0		
Percent of Change																				
COUNTY TOTAL	2008	48	211	20.3	14	1.3	0	5	1	8	197	18.9	2	56	136	3	49	11		
Population:	10,450	2009	167	16.0	17	1.6	0	1	0	16	150	14.4	1	56	85	8	52	7		
Percent of Change																				
MASON CO. S.O.	2008	12	1,788	37.8	140	3.0	0	31	11	98	1,648	34.8	9	641	844	154	157	20		
Population:	47,835	2009	1,711	35.8	133	2.8	0	26	10	97	1,578	33.0	2	597	793	186	135	10		
Percent of Change			-4.3%	-5.3%	-5.0%	-6.0%		-16.1%	-9.1%	-1.0%	-4.2%	-5.3%	-77.8%	-6.9%	-6.0%	20.8%	-14.0%	-50.0%		
SHELTON P.D.	2008	12	941	104.8	56	6.2	0	14	5	37	885	98.6	2	164	643	76	826	68		
Population:	8,965	2009	906	101.1	63	7.0	0	17	7	39	843	94.0	0	135	633	75	878	53		
Percent of Change			-3.7%	-3.6%	12.5%	12.7%		21.4%	40.0%	5.4%	-4.7%	-4.6%	-100.0%	-17.7%	-1.6%	-1.3%	6.3%	-22.1%		
SKOKOMISH TRIBAL P.D.	2008	0	No Report From This Agency For This Period																	
Population:	0	2009	0	No Report From This Agency For This Period																
Percent of Change																				

NOTE: Those agencies reporting less than 12 months of data for either year will not show the "Percent of Change"

Table 7
Part 1 Crimes and Clearance Reported
By Agency, County, Offense
Rate per 1,000 Population and Percent of Change
2008 - 2009

CAUTION: The populations of non-reporting agencies are shown as zero.

	Year	Months Reported	Crime Index Offenses		Violent Crime				Property Crime					Motor Vehicle Theft	Total Cleared	Juvenile Cleared			
			Total	Rate per 1,000	Total	Rate per 1,000	Murder	Rape	Robbery	Agg. Assault	Total	Rate per 1,000	Arson				Burglary	Larceny	
SQUAXIN TRIBAL P.D.	2008	0	No Report From This Agency For This Period																
Population:	0	2009	No Report From This Agency For This Period																
Percent of Change																			
COUNTY TOTAL	2008	24	2,729	48.5	196	3.5	0	45	16	135	2,533	45.0	11	805	1,487	230	983	88	
Population:	56,800	2009	2,617	46.1	196	3.5	0	43	17	136	2,421	42.6	2	732	1,426	261	1,013	63	
Percent of Change			-4.1%	-4.9%	0.0%	0.9%		-4.4%	6.3%	0.7%	-4.4%	-5.3%	-81.8%	-9.1%	-4.1%	13.5%	3.1%	-28.4%	

OKANOGAN CO. S.O.	2008	12	483	17.4	13	0.5	0	3	2	8	470	16.9	0	171	269	30	61	8	
Population:	28,050	2009	362	12.9	21	0.7	1	4	1	15	341	12.2	1	123	189	28	37	8	
Percent of Change			-25.1%	-25.8%	61.5%	59.9%		33.3%	-50.0%	87.5%	-27.4%	-28.2%		-28.1%	-29.7%	-6.7%	-39.3%	0.0%	
BREWSTER P.D.	2008	12	131	59.7	7	3.2	0	1	0	6	124	56.5	2	35	78	9	14	4	
Population:	2,205	2009	124	56.2	8	3.6	0	2	1	5	116	52.6	1	36	69	10	34	3	
Percent of Change			-5.3%	-5.8%	14.3%	13.8%		100.0%		-16.7%	-6.5%	-6.9%	-50.0%	2.9%	-11.5%	11.1%	142.9%	-25.0%	
COLVILLE TRIBAL P.D.	2008	0	No Report From This Agency For This Period																
Population:	0	2009	No Report From This Agency For This Period																
Percent of Change																			
COULEE DAM P.D.	2008	12	16	15.6	3	2.9	0	1	0	2	13	12.7	0	3	7	3	7	3	
Population:	1,025	2009	36	35.1	3	2.9	0	1	1	1	33	32.2	0	15	16	2	21	15	
Percent of Change			125.0%	125.0%	0.0%	0.0%		0.0%		-50.0%	153.8%	153.8%		400.0%	128.6%	-33.3%	200.0%	400.0%	
OMAK P.D.	2008	12	262	55.2	22	4.6	0	5	7	10	240	50.5	0	87	140	13	79	13	
Population:	4,780	2009	207	43.3	13	2.7	0	3	3	7	194	40.6	0	36	150	8	85	11	
Percent of Change			-21.0%	-21.5%	-40.9%	-41.3%		-40.0%	-57.1%	-30.0%	-19.2%	-19.7%		-58.6%	7.1%	-38.5%	7.6%	-15.4%	
OROVILLE P.D.	2008	12	92	53.6	8	4.7	0	2	0	6	84	49.0	0	17	64	3	20	4	
Population:	1,750	2009	76	43.4	7	4.0	0	3	1	3	69	39.4	0	21	42	6	20	5	
Percent of Change			-17.4%	-19.0%	-12.5%	-14.3%		50.0%		-50.0%	-17.9%	-19.5%		23.5%	-34.4%	100.0%	0.0%	25.0%	
TONASKET P.D.	2008	12	69	69.0	0	0.0	0	0	0	0	69	69.0	0	10	56	3	7	0	
Population:	1,010	2009	52	51.5	1	1.0	0	0	0	1	51	50.5	0	9	40	2	6	3	
Percent of Change			-24.6%	-25.4%							-26.1%	-26.8%		-10.0%	-28.6%	-33.3%	-14.3%		
TWISP P.D.	2008	12	45	45.7	2	2.0	0	0	0	2	43	43.7	0	10	33	0	10	0	
Population:	985	2009	35	35.5	5	5.1	1	1	0	3	30	30.5	0	16	14	0	10	2	
Percent of Change			-22.2%	-22.2%	150.0%	150.0%				50.0%	-30.2%	-30.2%		60.0%	-57.6%		0.0%		
WINTHROP P.D.	2008	12	14	35.0	0	0.0	0	0	0	0	14	35.0	0	3	11	0	7	0	
Population:	425	2009	16	37.6	1	2.4	0	0	0	1	15	35.3	0	4	10	1	10	0	
Percent of Change			14.3%	7.6%							7.1%	0.8%		33.3%	-9.1%		42.9%		

NOTE: Those agencies reporting less than 12 months of data for either year will not show the "Percent of Change"

Table 7
Part 1 Crimes and Clearance Reported
By Agency, County, Offense
Rate per 1,000 Population and Percent of Change
2008 - 2009

CAUTION: The populations of non-reporting agencies are shown as zero.

	Year	Months Reported	Crime Index Offenses		Violent Crime				Property Crime					Motor Vehicle Theft	Total Cleared	Juvenile Cleared				
			Total	Rate per 1,000	Total	Rate per 1,000	Murder	Rape	Robbery	Agg. Assault	Total	Rate per 1,000	Arson				Burglary	Larceny		
COUNTY TOTAL	2008	96	1,112	27.9	55	1.4	0	12	9	34	1,057	26.5	2	336	658	61	205	32		
Population:	40,230	2009	96	908	22.6	59	1.5	2	14	7	36	849	21.1	2	260	530	57	223	47	
Percent of Change			-18.3%	-19.2%	7.3%	8.4%		16.7%	-22.2%	5.9%	-19.7%	-20.5%	0.0%	-22.6%	-19.5%	-6.6%	8.8%	46.9%		

PACIFIC CO. S.O.	2008	12	405	28.0	22	1.5	0	4	1	17	383	26.5	3	158	204	18	32	4		
Population:	14,415	2009	12	346	24.0	42	2.9	0	9	1	32	304	21.1	1	142	151	10	40	2	
Percent of Change			-14.6%	-14.4%	90.9%	91.3%		125.0%	0.0%	88.2%	-20.6%	-20.5%	-66.7%	-10.1%	-26.0%	-44.4%	25.0%	-50.0%		
ILWACO P.D.	2008	12	45	42.1	11	10.3	0	0	1	10	34	31.8	0	4	29	1	15	2		
Population:	1,070	2009	12	33	30.8	3	2.8	1	0	0	2	30	28.0	1	11	15	3	3	0	
Percent of Change			-26.7%	-26.7%	-72.7%	-72.7%				-100.0%	-80.0%	-11.8%	-11.8%	175.0%	-48.3%	200.0%	-80.0%	-100.0%		
LONG BEACH P.D.	2008	12	96	63.6	4	2.6	0	2	0	2	92	60.9	0	49	41	2	20	0		
Population:	1,535	2009	12	79	51.5	2	1.3	1	0	0	77	50.2	0	18	57	2	9	2		
Percent of Change			-17.7%	-19.0%	-50.0%	-50.8%		-100.0%		-50.0%	-16.3%	-17.7%		-63.3%	39.0%	0.0%	-55.0%			
RAYMOND P.D.	2008	12	113	37.6	12	4.0	0	0	0	12	101	33.6	1	21	72	7	9	1		
Population:	3,010	2009	12	89	29.6	9	3.0	0	1	0	8	26.6	0	35	42	3	8	0		
Percent of Change			-21.2%	-21.4%	-25.0%	-25.1%					-33.3%	-20.8%	-20.9%	-100.0%	66.7%	-41.7%	-57.1%	-11.1%	-100.0%	
SHOALWATER BAY TRIBAL P.D.	2008	0	No Report From This Agency For This Period																	
Population:	0	2009	0	No Report From This Agency For This Period																
Percent of Change																				
SOUTH BEND P.D.	2008	12	52	29.4	1	0.6	0	0	0	1	51	28.8	1	9	37	4	27	11		
Population:	1,770	2009	12	42	23.7	1	0.6	0	0	0	41	23.2	0	6	35	0	8	3		
Percent of Change			-19.2%	-19.2%	0.0%	0.0%				0.0%	-19.6%	-19.6%	-100.0%	-33.3%	-5.4%	-100.0%	-70.4%	-72.7%		
COUNTY TOTAL	2008	60	711	32.6	50	2.3	0	6	2	42	661	30.3	5	241	383	32	103	18		
Population:	21,800	2009	60	589	27.0	57	2.6	2	10	1	44	532	24.4	2	212	300	18	68	7	
Percent of Change			-17.2%	-17.2%	14.0%	14.0%		66.7%	-50.0%	4.8%	-19.5%	-19.5%	-60.0%	-12.0%	-21.7%	-43.8%	-34.0%	-61.1%		

PEND OREILLE CO. S.O.	2008	12	401	31.3	7	0.5	0	1	2	4	394	30.8	0	107	257	30	31	6		
Population:	12,735	2009	12	343	26.9	5	0.4	0	1	0	4	338	26.5	1	82	234	21	40	7	
Percent of Change			-14.5%	-14.0%	-28.6%	-28.2%		0.0%	-100.0%	0.0%	-14.2%	-13.8%		-23.4%	-8.9%	-30.0%	29.0%	16.7%		
KALISPEL TRIBAL P.D.	2008	0	No Report From This Agency For This Period																	
Population:	0	2009	0	No Report From This Agency For This Period																
Percent of Change																				
COUNTY TOTAL	2008	12	401	31.3	7	0.5	0	1	2	4	394	30.8	0	107	257	30	31	6		
Population:	12,735	2009	12	343	26.9	5	0.4	0	1	0	4	338	26.5	1	82	234	21	40	7	
Percent of Change			-14.5%	-14.0%	-28.6%	-28.9%		0.0%	-100.0%	0.0%	-14.2%	-13.8%		-23.4%	-8.9%	-30.0%	29.0%	16.7%		

NOTE: Those agencies reporting less than 12 months of data for either year will not show the "Percent of Change"

Table 7
Part 1 Crimes and Clearance Reported
By Agency, County, Offense
Rate per 1,000 Population and Percent of Change
2008 - 2009

CAUTION: The populations of non-reporting agencies are shown as zero.

		Months Year Reported	Crime Index Offenses		Violent Crime				Property Crime					Motor Vehicle Theft	Total Cleared	Juvenile Cleared			
			Total	Rate per 1,000	Total	Rate per 1,000	Murder	Rape	Robbery	Agg. Assault	Total	Rate per 1,000	Arson				Burglary	Larceny	
PIERCE CO. S.O.		2008	12	11,255	29.8	1,153	3.0	10	114	199	830	10,102	26.7	63	2,536	6,075	1,428	1,280	240
Population:	382,555	2009	12	11,603	30.3	1,178	3.1	18	92	259	809	10,425	27.3	43	2,958	6,188	1,236	1,228	248
Percent of Change				3.1%	1.9%	2.2%	1.0%	80.0%	-19.3%	30.2%	-2.5%	3.2%	2.0%	-31.7%	16.6%	1.9%	-13.4%	-4.1%	3.3%
BONNEY LAKE P.D.		2008	12	471	29.0	33	2.0	1	4	4	24	438	27.0	5	87	317	29	151	55
Population:	16,500	2009	12	419	25.4	26	1.6	0	4	8	14	393	23.8	0	71	296	26	105	39
Percent of Change				-11.0%	-12.5%	-21.2%	-22.5%	-100.0%	0.0%	100.0%	-41.7%	-10.3%	-11.8%	-100.0%	-18.4%	-6.6%	-10.3%	-30.5%	-29.1%
BUCKLEY P.D.		2008	12	115	20.2	13	2.3	0	1	1	11	102	18.0	5	19	71	7	25	5
Population:	5,745	2009	12	136	23.7	7	1.2	0	0	1	6	129	22.5	3	33	89	4	17	4
Percent of Change				18.3%	16.9%	-46.2%	-46.8%		-100.0%	0.0%	-45.5%	26.5%	25.0%	-40.0%	73.7%	25.4%	-42.9%	-32.0%	-20.0%
DUPONT P.D.		2008	12	66	8.9	12	1.6	0	2	1	9	54	7.3	0	15	36	3	12	1
Population:	7,650	2009	12	76	9.9	7	0.9	0	1	2	4	69	9.0	0	15	50	4	11	5
Percent of Change				15.2%	11.2%	-41.7%	-43.6%		-50.0%	100.0%	-55.6%	27.8%	23.4%		0.0%	38.9%	33.3%	-8.3%	400.0%
EATONVILLE P.D.		2008	12	80	33.7	4	1.7	0	1	0	3	76	32.0	6	20	48	2	19	8
Population:	2,405	2009	12	57	23.7	3	1.2	0	1	0	2	54	22.5	2	14	37	1	13	5
Percent of Change				-28.8%	-29.6%	-25.0%	-25.9%		0.0%		-33.3%	-28.9%	-29.8%	-66.7%	-30.0%	-22.9%	-50.0%	-31.6%	-37.5%
EDGEWOOD P.D.		2008	12	260	27.1	20	2.1	0	0	2	18	240	25.0	2	88	139	11	15	0
Population:	9,615	2009	12	263	27.4	17	1.8	0	1	5	11	246	25.6	1	90	142	13	15	2
Percent of Change				1.2%	0.9%	-15.0%	-15.2%			150.0%	-38.9%	2.5%	2.3%	-50.0%	2.3%	2.2%	18.2%	0.0%	
FIFE P.D.		2008	12	618	82.1	47	6.2	0	2	10	35	571	75.9	6	85	361	119	53	7
Population:	7,610	2009	12	660	86.7	47	6.2	0	7	12	28	613	80.6	0	120	416	77	57	3
Percent of Change				6.8%	5.6%	0.0%	-1.1%		250.0%	20.0%	-20.0%	7.4%	6.2%	-100.0%	41.2%	15.2%	-35.3%	7.5%	-57.1%
FIRCREST P.D.		2008	12	170	26.9	9	1.4	0	1	1	7	161	25.5	0	38	108	15	23	7
Population:	6,325	2009	12	127	20.1	18	2.8	0	2	2	14	109	17.2	0	33	69	7	17	2
Percent of Change				-25.3%	-25.4%	100.0%	99.7%		100.0%	100.0%	100.0%	-32.3%	-32.4%		-13.2%	-36.1%	-53.3%	-26.1%	-71.4%
GIG HARBOR P.D.		2008	12	365	52.8	13	1.9	0	2	5	6	352	50.9	3	39	284	26	120	29
Population:	7,165	2009	12	417	58.2	17	2.4	0	3	7	7	400	55.8	1	52	331	16	104	27
Percent of Change				14.2%	10.2%	30.8%	26.1%		50.0%	40.0%	16.7%	13.6%	9.6%	-66.7%	33.3%	16.5%	-38.5%	-13.3%	-6.9%
LAKEWOOD P.D.		2008	12	4,034	68.6	541	9.2	5	59	147	330	3,493	59.4	26	700	2,367	400	640	138
Population:	58,840	2009	12	3,612	61.4	561	9.5	2	47	171	341	3,051	51.9	16	585	2,195	255	528	62
Percent of Change				-10.5%	-10.6%	3.7%	3.6%	-60.0%	-20.3%	16.3%	3.3%	-12.7%	-12.7%	-38.5%	-16.4%	-7.3%	-36.3%	-17.5%	-55.1%
MILTON P.D.		2008	12	286	43.8	30	4.6	0	1	12	17	256	39.2	0	58	166	32	46	5
Population:	6,535	2009	12	315	48.2	25	3.8	0	0	11	14	290	44.4	3	68	198	21	37	6
Percent of Change				10.1%	10.1%	-16.7%	-16.7%		-100.0%	-8.3%	-17.6%	13.3%	13.3%		17.2%	19.3%	-34.4%	-19.6%	20.0%

NOTE: Those agencies reporting less than 12 months of data for either year will not show the "Percent of Change"

Table 7
Part 1 Crimes and Clearance Reported
By Agency, County, Offense
Rate per 1,000 Population and Percent of Change
2008 - 2009

CAUTION: The populations of non-reporting agencies are shown as zero.

		Months Year Reported	Crime Index Offenses		Violent Crime				Property Crime					Motor Vehicle Theft	Total Cleared	Juvenile Cleared			
			Total	Rate per 1,000	Total	Rate per 1,000	Murder	Rape	Robbery	Agg. Assault	Total	Rate per 1,000	Arson				Burglary	Larceny	
ORTING P.D.		2008	12	176	29.0	4	0.7	0	0	3	1	172	28.3	2	37	121	12	29	16
Population:	6,135	2009	12	189	30.8	13	2.1	0	3	3	7	176	28.7	2	47	118	9	29	12
Percent of Change				7.4%	6.3%	225.0%	221.8%			0.0%	600.0%	2.3%	1.3%	0.0%	27.0%	-2.5%	-25.0%	0.0%	-25.0%
PUYALLUP TRIBAL P.D.		2008	0	No Report From This Agency For This Period.															
Population:	0	2009	0	No Report From This Agency For This Period.															
Percent of Change																			
PUYALLUP P.D.		2008	12	2,805	76.0	153	4.1	0	18	50	85	2,652	71.8	19	296	1,938	399	791	210
Population:	38,690	2009	12	3,163	81.8	151	3.9	0	20	50	81	3,012	77.8	15	422	2,259	316	726	173
Percent of Change				12.8%	7.6%	-1.3%	-5.8%		11.1%	0.0%	-4.7%	13.6%	8.4%	-21.1%	42.6%	16.6%	-20.8%	-8.2%	-17.6%
ROY P.D.		2008	12	32	36.6	9	10.3	0	1	0	8	23	26.3	1	3	17	2	8	2
Population:	870	2009	12	27	31.0	3	3.4	0	0	0	3	24	27.6	0	6	15	3	3	0
Percent of Change				-15.6%	-15.1%	-66.7%	-66.5%		-100.0%		-62.5%	4.3%	4.9%	-100.0%	100.0%	-11.8%	50.0%	-62.5%	-100.0%
RUSTON P.D.		2008	12	34	45.0	2	2.6	0	0	1	1	32	42.4	1	10	15	6	4	0
Population:	765	2009	12	41	53.6	8	10.5	0	1	2	5	33	43.1	0	5	23	5	8	1
Percent of Change				20.6%	19.0%	300.0%	294.8%			100.0%	400.0%	3.1%	1.8%	-100.0%	-50.0%	53.3%	-16.7%	100.0%	
STEILACOOM P.D.		2008	12	96	15.3	8	1.3	0	2	1	5	88	14.1	1	17	64	6	9	2
Population:	6,285	2009	12	89	14.2	15	2.4	0	2	1	12	74	11.8	1	22	44	7	18	3
Percent of Change				-7.3%	-7.7%	87.5%	86.6%		0.0%	0.0%	140.0%	-15.9%	-16.3%	0.0%	29.4%	-31.3%	16.7%	100.0%	50.0%
SUMNER P.D.		2008	12	544	60.0	52	5.7	0	8	8	36	492	54.3	6	103	318	65	73	22
Population:	9,085	2009	12	513	56.5	46	5.1	1	2	10	33	467	51.4	3	97	313	54	64	10
Percent of Change				-5.7%	-6.0%	-11.5%	-11.8%		-75.0%	25.0%	-8.3%	-5.1%	-5.3%	-50.0%	-5.8%	-1.6%	-16.9%	-12.3%	-54.5%
TACOMA P.D.		2008	12	17,174	84.7	2,005	9.9	13	150	622	1,220	15,169	74.8	75	2,899	9,499	2,696	2,301	452
Population:	203,400	2009	12	16,013	78.7	1,942	9.5	9	141	648	1,144	14,071	69.2	75	2,899	9,425	1,672	2,038	407
Percent of Change				-6.8%	-7.1%	-3.1%	-3.5%	-30.8%	-6.0%	4.2%	-6.2%	-7.2%	-7.6%	0.0%	0.0%	-0.8%	-38.0%	-11.4%	-10.0%
UNIVERSITY PLACE P.D.		2008	12	935	29.7	94	3.0	1	5	34	54	841	26.7	7	216	517	101	134	35
Population:	31,500	2009	12	1,039	33.0	104	3.3	3	12	35	54	935	29.7	5	309	559	62	150	39
Percent of Change				11.1%	10.9%	10.6%	10.4%	200.0%	140.0%	2.9%	0.0%	11.2%	11.0%	-28.6%	43.1%	8.1%	-38.6%	11.9%	11.4%
COUNTY TOTAL		2008	228	39,516	49.4	4,202	5.2	30	371	1,101	2,700	35,314	44.2	228	7,266	22,461	5,359	5,733	1,234
Population:	807,675	2009	228	38,759	48.0	4,188	5.2	33	339	1,227	2,589	34,571	42.8	170	7,846	22,767	3,788	5,168	1,048
Percent of Change				-1.9%	-2.9%	-0.3%	0.7%	10.0%	-8.6%	11.4%	-4.1%	-2.1%	-3.1%	-25.4%	8.0%	1.4%	-29.3%	-9.9%	-15.1%
SAN JUAN CO. S.O.		2008	12	264	16.4	7	0.4	1	0	0	6	257	16.0	1	86	152	18	28	7
Population:	16,300	2009	12	280	17.2	9	0.6	0	2	0	7	271	16.6	1	90	166	14	33	14
Percent of Change				6.1%	4.8%	28.6%	27.0%	-100.0%			16.7%	5.4%	4.2%	0.0%	4.7%	9.2%	-22.2%	17.9%	100.0%

NOTE: Those agencies reporting less than 12 months of data for either year will not show the "Percent of Change"

Table 7
Part 1 Crimes and Clearance Reported
By Agency, County, Offense
Rate per 1,000 Population and Percent of Change
2008 - 2009

CAUTION: The populations of non-reporting agencies are shown as zero.

		Months		Crime Index Offenses		Violent Crime				Property Crime				Motor Vehicle Theft	Total Cleared	Juvenile Cleared				
		Year	Reported	Total	Rate per 1,000	Total	Rate per 1,000	Murder	Rape	Robbery	Agg. Assault	Total	Rate per 1,000				Arson	Burglary	Larceny	
COUNTY TOTAL		2008	24	224	20.9	11	1.0	0	3	1	7	213	19.9	0	57	137	19	42	3	
Population:	10,800	2009	20	243	22.5	23	2.1	1	10	1	11	220	20.4	3	50	144	23	79	14	
Percent of Change																				

SNOHOMISH CO. S.O.	*	2008	9	5,301	16.2	463	1.4	4	104	92	263	4,838	14.7	49	1,528	2,455	806	702	89	
Population:	332,095	2009	12	6,642	20.0	546	1.6	10	80	126	330	6,096	18.4	53	2,228	3,063	752	1,022	140	
Percent of Change																				
ARLINGTON P.D.		2008	12	789	46.3	34	2.0	0	1	11	22	755	44.3	3	108	556	88	158	37	
Population:	17,150	2009	12	639	37.3	31	1.8	1	3	15	12	608	35.5	0	94	429	85	161	38	
Percent of Change				-19.0%	-19.5%	-8.8%	-9.4%		200.0%	36.4%	-45.5%	-19.5%	-19.9%	-100.0%	-13.0%	-22.8%	-3.4%	1.9%	2.7%	
BRIER P.D.		2008	12	99	15.3	4	0.6	0	0	2	2	95	14.6	3	22	64	6	15	4	
Population:	6,490	2009	12	94	14.5	3	0.5	0	1	0	2	91	14.0	4	22	63	2	12	4	
Percent of Change				-5.1%	-5.1%	-25.0%	-25.1%			-100.0%	0.0%	-4.2%	-4.3%	33.3%	0.0%	-1.6%	-66.7%	-20.0%	0.0%	
EDMONDS P.D.		2008	12	1,034	25.4	63	1.5	0	4	21	38	971	23.8	7	231	671	62	262	40	
Population:	40,900	2009	12	1,015	24.8	73	1.8	1	4	27	41	942	23.0	11	213	666	52	279	33	
Percent of Change				-1.8%	-2.2%	15.9%	15.5%		0.0%	28.6%	7.9%	-3.0%	-3.3%	57.1%	-7.8%	-0.7%	-16.1%	6.5%	-17.5%	
EVERETT P.D.		2008	12	8,144	79.6	584	5.7	1	76	223	284	7,560	73.9	18	1,251	5,108	1,183	1,548	253	
Population:	103,500	2009	12	7,573	73.2	610	5.9	2	51	263	294	6,963	67.3	15	1,099	5,070	779	1,573	254	
Percent of Change				-7.0%	-8.1%	4.5%	3.2%	100.0%	-32.9%	17.9%	3.5%	-7.9%	-9.0%	-16.7%	-12.2%	-0.7%	-34.2%	1.6%	0.4%	
GRANITE FALLS P.D.		2008	12	161	48.9	14	4.3	0	1	0	13	147	44.7	2	28	100	17	74	15	
Population:	3,375	2009	12	133	39.4	8	2.4	0	0	2	6	125	37.0	1	27	92	5	59	10	
Percent of Change				-17.4%	-19.5%	-42.9%	-44.3%		-100.0%		-53.8%	-15.0%	-17.1%	-50.0%	-3.6%	-8.0%	-70.6%	-20.3%	-33.3%	
LAKE STEVENS P.D.		2008	12	578	39.7	28	1.9	0	3	5	20	550	37.8	6	111	372	61	133	51	
Population:	14,800	2009	12	488	33.0	25	1.7	0	3	10	12	463	31.3	8	76	344	35	104	30	
Percent of Change				-15.6%	-16.9%	-10.7%	-12.2%		0.0%	100.0%	-40.0%	-15.8%	-17.2%	33.3%	-31.5%	-7.5%	-42.6%	-21.8%	-41.2%	
LYNNWOOD P.D.		2008	12	2,445	68.5	146	4.1	1	6	62	77	2,299	64.4	6	258	1,849	186	1,017	300	
Population:	35,740	2009	12	2,382	66.6	108	3.0	0	9	53	46	2,274	63.6	8	230	1,887	149	1,011	291	
Percent of Change				-2.6%	-2.7%	-26.0%	-26.2%	-100.0%	50.0%	-14.5%	-40.3%	-1.1%	-1.3%	33.3%	-10.9%	2.1%	-19.9%	-0.6%	-3.0%	
MARYSVILLE P.D.		2008	12	1,301	35.1	75	2.0	0	12	19	44	1,226	33.1	12	247	782	185	381	95	
Population:	37,560	2009	12	1,581	42.1	89	2.4	1	9	34	45	1,492	39.7	7	245	1,093	147	493	85	
Percent of Change				21.5%	19.9%	18.7%	17.1%		-25.0%	78.9%	2.3%	21.7%	20.1%	-41.7%	-0.8%	39.8%	-20.5%	29.4%	-10.5%	
MILL CREEK P.D.		2008	12	489	27.5	25	1.4	0	2	10	13	464	26.1	1	92	308	63	57	18	
Population:	18,480	2009	12	537	29.1	29	1.6	0	3	11	15	508	27.5	3	108	372	25	77	14	
Percent of Change				9.8%	5.6%	16.0%	11.5%		50.0%	10.0%	15.4%	9.5%	5.3%	200.0%	17.4%	20.8%	-60.3%	35.1%	-22.2%	

*Snohomish County Sheriffs Office had 1 murder in 2008 that occurred during a month in which they weren't able to report other types of crime data.

NOTE: Those agencies reporting less than 12 months of data for either year will not show the "Percent of Change"

Table 7
Part 1 Crimes and Clearance Reported
By Agency, County, Offense
Rate per 1,000 Population and Percent of Change
2008 - 2009

CAUTION: The populations of non-reporting agencies are shown as zero.

	Year	Months Reported	Crime Index Offenses		Violent Crime				Property Crime					Motor Vehicle Theft	Total Cleared	Juvenile Cleared		
			Total	Rate per 1,000	Total	Rate per 1,000	Murder	Rape	Robbery	Agg. Assault	Total	Rate per 1,000	Arson				Burglary	Larceny
MONROE P.D.	2008	12	495	29.9	51	3.1	1	5	10	35	444	26.8	3	55	337	49	116	32
Population: 16,710	2009	12	592	35.4	61	3.7	1	11	10	39	531	31.8	5	80	384	62	129	32
Percent of Change			19.6%	18.5%	19.6%	18.5%	0.0%	120.0%	0.0%	11.4%	19.6%	18.4%	66.7%	45.5%	13.9%	26.5%	11.2%	0.0%
MOUNTLAKE TERRACE P.D. *	2008	12	603	28.8	41	2.0	1	6	17	17	562	26.9	7	106	393	56	120	27
Population: 20,960	2009	12	564	26.9	43	2.1	0	10	14	19	521	24.9	12	98	368	43	127	36
Percent of Change			-6.5%	-6.6%	4.9%	4.7%	-100.0%	66.7%	-17.6%	11.8%	-7.3%	-7.4%	71.4%	-7.5%	-6.4%	-23.2%	5.8%	33.3%
MUKILTEO P.D.	2008	12	518	25.8	18	0.9	0	3	5	10	500	24.9	2	137	299	62	48	11
Population: 20,110	2009	12	580	28.8	21	1.0	0	6	6	9	559	27.8	7	134	386	32	56	15
Percent of Change			12.0%	11.6%	16.7%	16.3%		100.0%	20.0%	-10.0%	11.8%	11.5%	250.0%	-2.2%	29.1%	-48.4%	16.7%	36.4%
SAUK-SUIATLE TRIBAL P.D.	2008	0	No Report From This Agency For This Period															
Population: 0	2009	0	No Report From This Agency For This Period															
Percent of Change																		
SNOHOMISH P.D.	2008	12	393	43.6	26	2.9	0	2	10	14	367	40.7	17	60	258	32	116	29
Population: 9,145	2009	12	478	52.3	39	4.3	0	5	13	21	439	48.0	7	79	324	29	235	42
Percent of Change			21.6%	20.0%	50.0%	47.9%		150.0%	30.0%	50.0%	19.6%	18.0%	-58.8%	31.7%	25.6%	-9.4%	102.6%	44.8%
STANWOOD P.D.	2008	12	262	48.1	11	2.0	0	5	1	5	251	46.1	0	41	193	17	61	27
Population: 5,590	2009	12	320	57.2	13	2.3	0	1	1	11	307	54.9	1	47	242	17	73	47
Percent of Change			22.1%	19.0%	18.2%	15.1%		-80.0%	0.0%	120.0%	22.3%	19.1%		14.6%	25.4%	0.0%	19.7%	74.1%
STILLAGUAMISH TRIBAL P.D.	2008	0	No Report From This Agency For This Period															
Population: 0	2009	0	No Report From This Agency For This Period															
Percent of Change																		
SULTAN P.D.	2008	0	No Report From This Agency For This Period															
Population: 4,555	2009	12	199	43.7	23	5.0	1	2	3	17	176	38.6	2	46	104	24	39	6
Percent of Change																		
TULALIP TRIBAL P.D.	2008	0	No Report From This Agency For This Period															
Population: 0	2009	0	No Report From This Agency For This Period															
Percent of Change																		
WOODWAY P.D.	2008	12	24	20.3	0	0.0	0	0	0	0	24	20.3	0	14	9	1	2	0
Population: 1,190	2009	12	15	12.6	0	0.0	0	0	0	0	15	12.6	0	8	7	0	0	0
Percent of Change			-37.5%	-38.0%							-37.5%	-38.0%		-42.9%	-22.2%	-100.0%	-100.0%	
COUNTY TOTAL	2008	189	22,636	33.5	1,583	2.3	8	230	488	857	21,053	31.1	136	4,289	13,754	2,874	4,810	1,028
Population: 688,350	2009	204	23,832	34.6	1,722	2.5	17	198	588	919	22,110	32.1	144	4,834	14,894	2,238	5,450	1,077
Percent of Change																		

*2008 Mountlake Terrace P.D. data includes one murder that occurred in 2008 but was not reported until 2009.

NOTE: Those agencies reporting less than 12 months of data for either year will not show the "Percent of Change"

Table 7
Part 1 Crimes and Clearance Reported
By Agency, County, Offense
Rate per 1,000 Population and Percent of Change
2008 - 2009

CAUTION: The populations of non-reporting agencies are shown as zero.

	Year	Months Reported	Crime Index Offenses		Violent Crime				Property Crime				Motor Vehicle Theft	Total Cleared	Juvenile Cleared					
			Total	Rate per 1,000	Total	Rate per 1,000	Murder	Rape	Robbery	Agg. Assault	Total	Rate per 1,000				Arson	Burglary	Larceny		
SPOKANE CO. S.O.																				
Population:	141,880	2008	12	2,733	19.7	247	1.8	4	9	25	209	2,486	18.0	13	646	1,599	228	387	94	
Percent of Change		2009	12	3,203	22.6	191	1.3	2	14	25	150	3,012	21.2	9	765	1,996	242	361	59	
				17.2%	14.4%	-22.7%	-24.5%	-50.0%	55.6%	0.0%	-28.2%	21.2%	18.2%	-30.8%	18.4%	24.8%	6.1%	-6.7%	-37.2%	
AIRWAY HEIGHTS P.D.																				
Population:	5,515	2008	12	177	33.8	26	5.0	1	5	4	16	151	28.8	0	26	108	17	88	12	
Percent of Change		2009	12	145	26.3	12	2.2	0	0	2	10	133	24.1	0	35	84	14	51	12	
				-18.1%	-22.2%	-53.8%	-56.1%	-100.0%	-100.0%	-50.0%	-37.5%	-11.9%	-16.3%		34.6%	-22.2%	-17.6%	-42.0%	0.0%	
CHENEY P.D.																				
Population:	10,550	2008	12	313	30.7	15	1.5	0	1	3	11	298	29.3	0	45	241	12	56	16	
Percent of Change		2009	12	336	31.8	24	2.3	0	6	4	14	312	29.6	1	57	242	12	61	9	
				7.3%	3.6%	60.0%	54.4%		500.0%	33.3%	27.3%	4.7%	1.0%		26.7%	0.4%	0.0%	8.9%	-43.8%	
E. WASH. UNIV. P.D.																				
Population:	0	2008	12	107	---	1	---	0	0	0	1	106	---	0	7	99	0	6	0	
Percent of Change		2009	12	105	---	3	---	0	1	1	1	102	---	0	8	94	0	10	0	
LIBERTY LAKE P.D.																				
Population:	7,270	2008	12	81	11.6	2	0.3	0	0	1	1	79	11.3	0	13	56	10	9	0	
Percent of Change		2009	12	68	9.4	3	0.4	0	1	0	2	65	8.9	0	13	50	2	13	3	
				-16.0%	-19.4%	50.0%	44.0%			-100.0%	100.0%	-17.7%	-21.0%		0.0%	-10.7%	-80.0%	44.4%		
MEDICAL LAKE P.D.																				
Population:	4,845	2008	12	41	8.5	4	0.8	0	2	0	2	37	7.7	1	13	22	1	19	10	
Percent of Change		2009	5	15	3.1	3	0.6	0	0	0	3	12	2.5	0	5	7	0	10	6	
SPOKANE P.D.																				
Population:	205,500	2008	12	12,435	60.8	1,352	6.6	13	94	460	785	11,083	54.2	58	2,269	7,218	1,538	2,753	597	
Percent of Change		2009	12	14,510	70.6	1,270	6.2	7	75	443	745	13,240	64.4	74	2,565	8,864	1,737	2,724	476	
				16.7%	16.1%	-6.1%	-6.6%	-46.2%	-20.2%	-3.7%	-5.1%	19.5%	18.8%	27.6%	13.0%	22.8%	12.9%	-1.1%	-20.3%	
SPOKANE VALLEY P.D.																				
Population:	89,440	2008	12	3,723	41.9	270	3.0	1	25	66	178	3,453	38.8	29	635	2,364	425	750	125	
Percent of Change		2009	12	3,544	39.6	265	3.0	1	19	63	182	3,279	36.7	17	616	2,393	253	667	118	
				-4.8%	-5.4%	-1.9%	-2.4%	0.0%	-24.0%	-4.5%	2.2%	-5.0%	-5.6%	-41.4%	-3.0%	1.2%	-40.5%	-11.1%	-5.6%	
COUNTY TOTAL																				
Population:	465,000	2008	96	19,610	42.7	1,917	4.1	19	136	559	1,203	17,693	38.5	101	3,654	11,707	2,231	4,068	854	
Percent of Change		2009	89	21,926	47.2	1,771	3.9	10	116	538	1,107	20,155	43.3	101	4,064	13,730	2,260	3,897	683	

STEVENS CO. S.O.																				
Population:	34,605	2008	12	673	19.6	37	1.1	1	15	3	18	636	18.5	3	243	331	59	118	21	
Percent of Change		2009	12	718	20.7	47	1.4	1	19	4	23	671	19.4	2	229	369	71	90	17	
				6.7%	5.8%	27.0%	26.0%	0.0%	26.7%	33.3%	27.8%	5.5%	4.6%	-33.3%	-5.8%	11.5%	20.3%	-23.7%	-19.0%	
CHEWELAH P.D.																				
Population:	2,420	2008	12	120	49.6	4	1.7	0	2	2	0	116	47.9	0	31	81	4	21	8	
Percent of Change		2009	12	88	36.4	7	2.9	0	1	1	5	81	33.5	0	30	48	3	23	6	
				-26.7%	-26.7%	75.0%	75.0%		-50.0%	-50.0%		-30.2%	-30.2%		-3.2%	-40.7%	-25.0%	9.5%	-25.0%	

*Medical Lake Police Department closed, effective Nov. 1, 2009. The city's crime was covered by Spokane Co. S.O. in Nov. Dec. 2009

NOTE: Those agencies reporting less than 12 months of data for either year will not show the "Percent of Change"

Table 7
Part 1 Crimes and Clearance Reported
By Agency, County, Offense
Rate per 1,000 Population and Percent of Change
2008 - 2009

CAUTION: The populations of non-reporting agencies are shown as zero.

	Year	Months Reported	Crime Index Offenses		Violent Crime				Property Crime				Motor Vehicle Theft	Total Cleared	Juvenile Cleared				
			Total	Rate per 1,000	Total	Rate per 1,000	Murder	Rape	Robbery	Agg. Assault	Total	Rate per 1,000				Arson	Burglary	Larceny	
COLVILLE P.D.	2008	12	196	38.9	5	1.0	0	1	2	2	191	37.9	0	8	182	1	48	16	
Population: 5,040	2009	12	160	31.7	3	0.6	0	0	1	2	157	31.2	0	18	136	3	47	7	
Percent of Change			-18.4%	-18.4%	-40.0%	-40.0%		-100.0%	-50.0%	0.0%	-17.8%	-17.8%		125.0%	-25.3%	200.0%	-2.1%	-56.3%	
KETTLE FALLS P.D.	2008	12	82	50.0	0	0.0	0	0	0	0	82	50.0	0	22	57	3	18	8	
Population: 1,655	2009	12	65	39.3	3	1.8	0	0	0	3	62	37.5	0	10	51	1	12	6	
Percent of Change			-20.7%	-21.5%							-24.4%	-25.1%		-54.5%	-10.5%	-66.7%	-33.3%	-25.0%	
SPOKANE TRIBAL P.D.	2008	0	No Report From This Agency For This Period																
Population: 0	2009	0	No Report From This Agency For This Period																
Percent of Change																			
SPRINGDALE P.D.	2008	0	No Report From This Agency For This Period																
Population: 0	2009	0	No Report From This Agency For This Period																
Percent of Change																			
COUNTY TOTAL	2008	48	1,071	24.7	46	1.1	1	18	7	20	1,025	23.6	3	304	651	67	205	53	
Population: 43,720	2009	48	1,031	23.6	60	1.4	1	20	6	33	971	22.2	2	287	604	78	172	36	
Percent of Change			-3.7%	-4.4%	30.4%	31.3%	0.0%	11.1%	-14.3%	65.0%	-5.3%	-5.9%	-33.3%	-5.6%	-7.2%	16.4%	-16.1%	-32.1%	
THURSTON CO. S.O.	2008	12	3,625	26.0	320	2.3	0	32	30	258	3,305	23.7	23	865	2,239	178	693	58	
Population: 139,010	2009	12	3,200	23.0	308	2.2	3	34	43	228	2,892	20.8	30	827	1,851	184	642	0	
Percent of Change			-11.7%	-11.3%	-3.8%	-3.3%		6.3%	43.3%	-11.6%	-12.5%	-12.1%	30.4%	-4.4%	-17.3%	3.4%	-7.4%	-100.0%	
EVERGREEN ST. COLLEGE P.D.	2008	12	139	---	1	---	0	1	0	0	138	---	1	27	106	4	26	0	
Population: 0	2009	12	117	---	0	---	0	0	0	0	117	---	1	11	105	0	21	0	
Percent of Change																			
LACEY P.D.	2008	12	1,833	48.2	98	2.6	1	16	24	57	1,735	45.6	3	237	1,403	92	523	83	
Population: 39,250	2009	12	1,604	40.9	95	2.4	0	13	22	60	1,509	38.4	3	217	1,183	106	485	89	
Percent of Change			-12.5%	-15.2%	-3.1%	-6.0%	-100.0%	-18.8%	-8.3%	5.3%	-13.0%	-15.7%	0.0%	-8.4%	-15.7%	15.2%	-7.3%	7.2%	
NISQUALLY TRIBAL P.D.	2008	9	15	---	3	---	0	0	0	3	12	---	0	1	11	0	5	0	
Population: 0	2009	3	5	---	0	---	0	0	0	0	5	---	0	0	5	0	0	0	
Percent of Change																			
OLYMPIA P.D.	2008	12	2,396	53.5	150	3.3	3	22	42	83	2,246	50.1	8	376	1,712	150	408	38	
Population: 45,250	2009	12	2,247	49.7	122	2.7	1	30	24	67	2,125	47.0	10	382	1,556	177	381	52	
Percent of Change			-6.2%	-7.2%	-18.7%	-19.5%	-66.7%	36.4%	-42.9%	-19.3%	-5.4%	-6.3%	25.0%	1.6%	-9.1%	18.0%	-6.6%	36.8%	
RAINIER P.D.	2008	12	25	14.4	2	1.1	0	1	1	0	23	13.2	0	11	12	0	11	5	
Population: 1,755	2009	12	38	21.7	6	3.4	0	0	0	6	32	18.2	0	12	19	1	8	4	
Percent of Change			52.0%	50.7%	200.0%	197.4%		-100.0%	-100.0%		39.1%	37.9%		9.1%	58.3%		-27.3%	-20.0%	

NOTE: Those agencies reporting less than 12 months of data for either year will not show the "Percent of Change"

Table 7
Part 1 Crimes and Clearance Reported
By Agency, County, Offense
Rate per 1,000 Population and Percent of Change
2008 - 2009

CAUTION: The populations of non-reporting agencies are shown as zero.

		Year	Months Reported	Crime Index Offenses		Violent Crime				Property Crime				Motor Vehicle Theft	Total Cleared	Juvenile Cleared			
				Total	Rate per 1,000	Total	Rate per 1,000	Murder	Rape	Robbery	Agg. Assault	Total	Rate per 1,000				Arson	Burglary	Larceny
TENINO P.D.		2008	12	70	32.0	4	1.8	0	0	1	3	66	30.2	0	18	46	2	31	9
Population:	2,200	2009	12	76	34.5	7	3.2	0	1	0	6	69	31.4	2	22	43	2	22	4
Percent of Change				8.6%	7.8%	75.0%	73.8%			-100.0%	100.0%	4.5%	3.8%		22.2%	-6.5%	0.0%	-29.0%	-55.6%
TUMWATER P.D.		2008	12	630	45.7	38	2.8	0	8	11	19	592	43.0	0	127	428	37	105	13
Population:	16,710	2009	12	567	33.9	58	3.5	0	18	11	29	509	30.5	1	131	341	36	112	9
Percent of Change				-10.0%	-25.8%	52.6%	25.9%		125.0%	0.0%	52.6%	-14.0%	-29.1%		3.1%	-20.3%	-2.7%	6.7%	-30.8%
YELM P.D.		2008	12	245	47.6	14	2.7	0	6	3	5	231	44.9	1	60	162	8	113	36
Population:	5,625	2009	12	246	43.7	20	3.6	1	3	10	6	226	40.2	0	32	173	21	123	42
Percent of Change				0.4%	-8.1%	42.9%	30.8%		-50.0%	233.3%	20.0%	-2.2%	-10.4%	-100.0%	-46.7%	6.8%	162.5%	8.8%	16.7%
COUNTY TOTAL		2008	105	8,978	36.6	630	2.5	4	86	112	428	8,348	34.0	36	1,722	6,119	471	1,915	242
Population:	249,800	2009	99	8,100	32.4	616	2.5	5	99	110	402	7,484	30.0	47	1,634	5,276	527	1,794	200
Percent of Change																			

WAHIAKUM CO. S.O.		2008	12	56	13.7	6	1.5	0	0	1	5	50	12.2	0	19	28	3	7	0
Population:	4,100	2009	12	25	6.1	8	2.0	0	1	0	7	17	4.1	2	7	7	1	10	2
Percent of Change				-55.4%	-55.4%	33.3%	33.3%			-100.0%	40.0%	-66.0%	-66.0%		-63.2%	-75.0%	-66.7%	42.9%	
COUNTY TOTAL		2008	12	56	13.7	6	1.5	0	0	1	5	50	12.2	0	19	28	3	7	0
Population:	4,100	2009	12	25	6.1	8	2.0	0	1	0	7	17	4.1	2	7	7	1	10	2
Percent of Change				-55.4%	-55.4%	33.3%	33.3%			-100.0%	40.0%	-66.0%	-66.0%		-63.2%	-75.0%	-66.7%	42.9%	

WALLA WALLA CO. S.O.		2008	12	355	19.4	19	1.0	0	8	1	10	336	18.3	0	83	238	15	58	22
Population:	18,555	2009	12	438	23.6	24	1.3	0	10	1	13	414	22.3	0	158	240	16	38	8
Percent of Change				23.4%	21.8%	26.3%	24.7%		25.0%	0.0%	30.0%	23.2%	21.6%		90.4%	0.8%	6.7%	-34.5%	-63.6%
COLLEGE PLACE P.D.		2008	12	216	24.2	3	0.3	0	2	0	1	213	23.8	0	28	175	10	36	9
Population:	9,035	2009	12	249	27.6	2	0.2	0	1	0	1	247	27.3	0	48	195	4	52	6
Percent of Change				15.3%	14.0%	-33.3%	-34.1%		-50.0%		0.0%	16.0%	14.7%		71.4%	11.4%	-60.0%	44.4%	-33.3%
WALLA WALLA P.D.		2008	12	1,525	48.6	126	4.0	1	26	12	87	1,399	44.6	11	264	1,052	72	273	76
Population:	31,610	2009	12	1,542	48.8	110	3.5	0	34	16	60	1,432	45.3	11	302	1,065	54	275	68
Percent of Change				1.1%	0.3%	-12.7%	-13.4%	-100.0%	30.8%	33.3%	-31.0%	2.4%	1.5%	0.0%	14.4%	1.2%	-25.0%	0.7%	-10.5%
COUNTY TOTAL		2008	36	2,096	35.8	148	2.5	1	36	13	98	1,948	33.2	11	375	1,465	97	367	107
Population:	59,200	2009	36	2,229	37.7	136	2.3	0	45	17	74	2,093	35.4	11	508	1,500	74	365	82
Percent of Change				6.3%	5.3%	-8.1%	-7.2%	-100.0%	25.0%	30.8%	-24.5%	7.4%	6.4%	0.0%	35.5%	2.4%	-23.7%	-0.5%	-23.4%

WHATCOM CO. S.O.		2008	12	1,512	18.0	131	1.6	0	35	5	91	1,381	16.5	5	493	761	122	228	31
Population:	84,686	2009	12	1,386	16.4	120	1.4	3	28	16	73	1,266	14.9	12	430	737	87	189	24
Percent of Change				-8.3%	-9.2%	-8.4%	-9.2%		-20.0%	220.0%	-19.8%	-8.3%	-9.2%	140.0%	-12.8%	-3.2%	-28.7%	-17.1%	-22.6%

NOTE: Those agencies reporting less than 12 months of data for either year will not show the "Percent of Change"

Table 7
Part 1 Crimes and Clearance Reported
By Agency, County, Offense
Rate per 1,000 Population and Percent of Change
2008 - 2009

CAUTION: The populations of non-reporting agencies are shown as zero.

	Year	Months Reported	Crime Index Offenses		Violent Crime			Property Crime					Motor Vehicle Theft	Total Cleared	Juvenile Cleared				
			Total	Rate per 1,000	Total	Rate per 1,000	Murder	Rape	Robbery	Agg. Assault	Total	Rate per 1,000				Arson	Burglary	Larceny	
BELLINGHAM P.D.	2008	12	4,562	60.2	181	2.4	2	23	59	97	4,381	57.8	23	641	3,515	202	1,123	180	
Population:	76,130	2009	4,529	59.5	171	2.2	2	37	48	84	4,358	57.2	17	651	3,547	143	1,213	178	
Percent of Change			-0.7%	-1.2%	-5.5%	-6.0%	0.0%	60.9%	-18.6%	-13.4%	-0.5%	-1.0%	-26.1%	1.6%	0.9%	-29.2%	8.0%	-1.1%	
BLAINE P.D.	2008	12	261	55.9	9	1.9	0	2	2	5	252	54.0	1	51	197	3	53	35	
Population:	4,740	2009	185	39.0	6	1.3	0	2	2	2	179	37.8	2	29	144	4	34	13	
Percent of Change			-29.1%	-30.2%	-33.3%	-34.4%		0.0%	0.0%	-60.0%	-29.0%	-30.1%	100.0%	-43.1%	-26.9%	33.3%	-35.8%	-62.9%	
EVERSON P.D.	2008	12	109	33.4	5	1.5	0	1	0	4	104	31.9	0	15	85	4	49	7	
Population:	3,448	2009	75	21.8	5	1.5	0	0	1	4	70	20.3	0	16	51	3	31	4	
Percent of Change			-31.2%	-34.9%	0.0%	-5.5%		-100.0%		0.0%	-32.7%	-36.4%		6.7%	-40.0%	-25.0%	-36.7%	-42.9%	
FERNDALE P.D.	2008	12	353	32.7	21	1.9	0	4	6	11	332	30.7	6	79	229	18	61	9	
Population:	11,080	2009	343	31.0	19	1.7	2	1	6	10	324	29.2	1	60	251	12	73	8	
Percent of Change			-2.8%	-5.3%	-9.5%	-11.8%		-75.0%	0.0%	-9.1%	-2.4%	-4.9%	-83.3%	-24.1%	9.6%	-33.3%	19.7%	-11.1%	
LUMMI TRIBAL P.D.	2008	12	370	---	77	---	0	1	9	67	293	---	6	73	202	12	65	9	
Population:	0	2009	438	---	92	---	1	5	7	79	346	---	1	115	217	13	66	4	
Percent of Change																			
LYNDEN P.D.	2008	12	208	18.3	9	0.8	0	2	3	4	199	17.5	3	35	159	2	35	12	
Population:	11,690	2009	195	16.7	12	1.0	0	1	2	9	183	15.7	0	37	146	0	73	10	
Percent of Change			-6.3%	-9.0%	33.3%	29.5%		-50.0%	-33.3%	125.0%	-8.0%	-10.7%	-100.0%	5.7%	-8.2%	-100.0%	108.6%	-16.7%	
NOOKSAK TRIBAL P.D.	2008	12	80	---	11	---	0	3	2	6	69	---	0	24	41	4	57	3	
Population:	0	2009	87	---	11	---	0	0	6	5	76	---	0	32	43	1	48	1	
Percent of Change																			
SUMAS P.D.	2008	12	51	40.3	0	0.0	0	0	0	0	51	40.3	0	11	37	3	21	7	
Population:	1,326	2009	52	39.2	5	3.8	0	2	1	2	47	35.4	0	11	35	1	28	2	
Percent of Change			2.0%	-2.8%							-7.8%	-12.2%		0.0%	-5.4%	-66.7%	33.3%	-71.4%	
W. WASH. UNIV. P.D.	2008	12	176	---	1	---	0	0	1	0	175	---	0	36	135	4	0	0	
Population:	0	2009	185	---	3	---	0	0	1	2	182	---	1	20	159	2	2	0	
Percent of Change																			
COUNTY TOTAL	2008	120	7,682	40.2	445	2.3	2	71	87	285	7,237	37.9	44	1,458	5,361	374	1,692	293	
Population:	193,100	2009	7,475	38.7	444	2.3	8	76	90	270	7,031	36.4	34	1,401	5,330	266	1,757	244	
Percent of Change			-2.7%	-3.8%	-0.2%	0.9%	300.0%	7.0%	3.4%	-5.3%	-2.8%	-3.9%	-22.7%	-3.9%	-0.6%	-28.9%	3.8%	-16.7%	

WHITMAN CO. S.O.	2008	12	85	9.2	5	0.5	0	2	0	3	80	8.7	1	29	42	8	45	4	
Population:	9,335	2009	58	6.2	3	0.3	0	0	1	2	55	5.9	0	16	32	7	16	0	
Percent of Change			-31.8%	-32.5%	-40.0%	-40.6%		-100.0%		-33.3%	-31.3%	-31.9%	-100.0%	-44.8%	-23.8%	-12.5%	-64.4%	-100.0%	

NOTE: Those agencies reporting less than 12 months of data for either year will not show the "Percent of Change"

Table 7
Part 1 Crimes and Clearance Reported
By Agency, County, Offense
Rate per 1,000 Population and Percent of Change
2008 - 2009

CAUTION: The populations of non-reporting agencies are shown as zero.

		Year	Months Reported	Crime Index Offenses		Violent Crime				Property Crime				Motor Vehicle Theft	Total Cleared	Juvenile Cleared				
				Total	Rate per 1,000	Total	Rate per 1,000	Murder	Rape	Robbery	Agg. Assault	Total	Rate per 1,000				Arson	Burglary	Larceny	
COLFAX P.D.		2008	3	3	1.0	0	0.0	0	0	0	0	3	1.0	1	2	0	0	0	0	
Population:	2,910	2009	12	15	5.2	0	0.0	0	0	0	0	15	5.2	4	1	9	1	2	0	
Percent of Change																				
COLTON P.D.		2008	0No Report From This Agency For This Period.....																
Population:	420	2009	12	0	0.0	0	0.0	0	0	0	0	0	0.0	0	0	0	0	0	0	0
Percent of Change																				
GARFIELD P.D.	*	2008	0No Report From This Agency For This Period.....																
Population:	630	2009	7	4	6.3	0	0.0	0	0	0	0	4	6.3	0	0	4	0	1	0	
Percent of Change																				
OAKESDALE P.D.		2008	12	6	14.3	0	0.0	0	0	0	0	6	14.3	0	3	3	0	6	0	
Population:	420	2009	12	4	9.5	0	0.0	0	0	0	4	9.5	0	1	3	0	2	0		
Percent of Change				-33.3%	-33.3%						-33.3%	-33.3%		-66.7%	0.0%		-66.7%			
PALOUSE P.D.	*	2008	12	9	5.4	0	0.0	0	0	0	9	5.4	0	3	5	1	2	0		
Population:	1,010	2009	12	9	8.9	0	0.0	0	0	0	9	8.9	0	4	5	0	1	1		
Percent of Change				0.0%	63.9%						0.0%	63.9%		33.3%	0.0%	-100.0%	-50.0%			
PULLMAN P.D.		2008	12	423	15.6	23	0.8	0	5	2	16	400	14.7	1	114	275	10	71	9	
Population:	27,600	2009	12	461	16.7	39	1.4	0	7	2	30	422	15.3	2	91	315	14	101	8	
Percent of Change				9.0%	7.2%	69.6%	66.8%		40.0%	0.0%	87.5%	5.5%	3.8%	100.0%	-20.2%	14.5%	40.0%	42.3%	-11.1%	
ROSALIA P.D.		2008	12	7	10.8	0	0.0	0	0	0	0	7	10.8	0	1	6	0	0	0	
Population:	640	2009	9	2	3.1	0	0.0	0	0	0	0	2	3.1	0	0	2	0	0	0	
Percent of Change																				
UNIONTOWN P.D.		2008	0No Report From This Agency For This Period.....																
Population:	0	2009	0No Report From This Agency For This Period.....																
Percent of Change																				
WASH. ST. UNIV. P.D.		2008	12	161	---	5	---	0	3	0	2	156	---	7	24	124	1	43	2	
Population:	0	2009	12	173	---	11	---	0	7	0	4	162	---	1	20	138	3	29	0	
Percent of Change																				
COUNTY TOTAL		2008	75	694	16.5	33	0.8	0	10	2	21	661	15.7	10	176	455	20	167	15	
Population:	42,965	2009	100	726	16.9	53	1.3	0	14	3	36	673	15.7	7	133	508	25	152	9	
Percent of Change																				
YAKIMA CO. S.O.		2008	12	2,707	30.4	131	1.5	5	17	42	67	2,576	28.9	67	943	1,157	409	428	67	
Population:	90,490	2009	12	2,546	28.1	124	1.4	7	24	26	67	2,422	26.8	45	1,043	987	347	335	52	
Percent of Change				-5.9%	-7.4%	-5.3%	-6.8%	40.0%	41.2%	-38.1%	0.0%	-6.0%	-7.5%	-32.8%	10.6%	-14.7%	-15.2%	-21.7%	-22.4%	

*Garfield PD was on contract with Palouse PD. from May 2008 through May 2009. The department is no longer on contract.

NOTE: Those agencies reporting less than 12 months of data for either year will not show the "Percent of Change"

Table 7
Part 1 Crimes and Clearance Reported
By Agency, County, Offense
Rate per 1,000 Population and Percent of Change
2008 - 2009

CAUTION: The populations of non-reporting agencies are shown as zero.

		Months Year Reported	Crime Index Offenses		Violent Crime				Property Crime					Motor Vehicle Theft	Total Cleared	Juvenile Cleared			
			Total	Rate per 1,000	Total	Rate per 1,000	Murder	Rape	Robbery	Agg. Assault	Total	Rate per 1,000	Arson				Burglary	Larceny	
GRANDVIEW P.D.		2008	12	379	40.6	14	1.5	1	0	1	12	365	39.1	2	88	219	56	54	16
Population:	9,405	2009	12	435	46.3	13	1.4	1	1	1	10	422	44.9	0	154	211	57	71	26
Percent of Change				14.8%	13.9%	-7.1%	-7.8%	0.0%		0.0%	-16.7%	15.6%	14.8%	-100.0%	75.0%	-3.7%	1.8%	31.5%	62.5%
GRANGER P.D.		2008	12	146	47.9	10	3.3	0	4	2	4	136	44.6	2	55	55	24	56	7
Population:	3,065	2009	12	171	55.8	12	3.9	1	3	1	7	159	51.9	1	48	84	26	38	8
Percent of Change				17.1%	16.6%	20.0%	19.4%		-25.0%	-50.0%	75.0%	16.9%	16.3%	-50.0%	-12.7%	52.7%	8.3%	-32.1%	14.3%
MABTON P.D.		2008	12	84	40.3	6	2.9	0	1	2	3	78	37.4	0	23	41	14	44	2
Population:	2,100	2009	12	79	37.6	2	1.0	0	0	0	2	77	36.7	0	21	34	22	39	2
Percent of Change				-6.0%	-6.6%	-66.7%	-66.9%		-100.0%	-100.0%	-33.3%	-1.3%	-2.0%		-8.7%	-17.1%	57.1%	-11.4%	0.0%
MOXEE CITY P.D.		2008	12	13	5.4	3	1.2	0	1	1	1	10	4.1	0	6	3	1	7	2
Population:	2,525	2009	12	24	9.5	3	1.2	0	0	2	1	21	8.3	0	8	11	2	4	3
Percent of Change				84.6%	76.6%	0.0%	-4.4%		-100.0%	100.0%	0.0%	110.0%	100.9%		33.3%	266.7%	100.0%	-42.9%	50.0%
SELAH P.D.		2008	12	218	30.7	5	0.7	0	5	0	0	213	30.0	0	54	145	14	77	20
Population:	7,185	2009	12	181	25.2	2	0.3	0	0	1	1	179	24.9	0	31	129	19	65	16
Percent of Change				-17.0%	-18.0%	-60.0%	-60.5%		-100.0%			-16.0%	-17.0%		-42.6%	-11.0%	35.7%	-15.6%	-20.0%
SUNNYSIDE P.D.		2008	12	1,179	77.5	41	2.7	2	2	14	23	1,138	74.8	9	260	603	266	257	72
Population:	15,340	2009	12	896	58.4	33	2.2	1	2	12	18	863	56.3	8	255	461	139	164	35
Percent of Change				-24.0%	-24.6%	-19.5%	-20.2%	-50.0%	0.0%	-14.3%	-21.7%	-24.2%	-24.8%	-11.1%	-1.9%	-23.5%	-47.7%	-36.2%	-51.4%
TIETON P.D.		2008	12	8	6.7	2	1.7	0	1	0	1	6	5.0	1	0	4	1	3	0
Population:	1,195	2009	12	4	3.3	1	0.8	0	1	0	0	3	2.5	0	2	0	1	2	0
Percent of Change				-50.0%	-50.0%	-50.0%	-50.0%		0.0%		-100.0%	-50.0%	-50.0%	-100.0%		-100.0%	0.0%	-33.3%	
TOPPENISH P.D.		2008	12	689	75.4	64	7.0	1	7	26	30	625	68.4	12	147	344	122	185	32
Population:	9,090	2009	12	635	69.9	57	6.3	3	6	28	20	578	63.6	6	122	366	84	191	32
Percent of Change				-7.8%	-7.3%	-10.9%	-10.4%	200.0%	-14.3%	7.7%	-33.3%	-7.5%	-7.0%	-50.0%	-17.0%	6.4%	-31.1%	3.2%	0.0%
UNION GAP P.D.		2008	12	701	122.0	23	4.0	1	5	8	9	678	118.0	1	115	516	46	333	107
Population:	5,830	2009	12	671	115.1	16	2.7	0	3	8	5	655	112.3	2	79	524	50	399	114
Percent of Change				-4.3%	-5.7%	-30.4%	-31.4%	-100.0%	-40.0%	0.0%	-44.4%	-3.4%	-4.8%	100.0%	-31.3%	1.6%	8.7%	19.8%	6.5%
WAPATO P.D.		2008	12	411	90.2	47	10.3	1	5	14	27	364	79.9	1	81	229	53	204	29
Population:	4,555	2009	12	377	82.8	36	7.9	0	4	12	20	341	74.9	4	95	193	49	78	11
Percent of Change				-8.3%	-8.3%	-23.4%	-23.4%	-100.0%	-20.0%	-14.3%	-25.9%	-6.3%	-6.3%	300.0%	17.3%	-15.7%	-7.5%	-61.8%	-62.1%
YAKAMA NATION TRIBAL P.D.		2008	0No Report From This Agency For This Period.....															
Population:	0	2009	0No Report From This Agency For This Period.....															
Percent of Change																			

NOTE: Those agencies reporting less than 12 months of data for either year will not show the "Percent of Change"

Table 7
Part 1 Crimes and Clearance Reported
By Agency, County, Offense
Rate per 1,000 Population and Percent of Change
2008 - 2009

CAUTION: The populations of non-reporting agencies are shown as zero.

	Year	Months Reported	Crime Index Offenses		Violent Crime			Property Crime					Motor Vehicle Theft	Total Cleared	Juvenile Cleared			
			Total	Rate per 1,000	Total	Rate per 1,000	Murder	Rape	Robbery	Agg. Assault	Total	Rate per 1,000				Arson	Burglary	Larceny
YAKIMA P.D.	2008	12	6,396	75.9	429	5.1	8	49	133	239	5,967	70.8	27	1,233	3,907	800	1,190	209
Population: 84,850	2009	12	5,618	66.2	525	6.2	9	74	137	305	5,093	60.0	26	1,306	3,072	689	1,119	176
Percent of Change			-12.2%	-12.7%	22.4%	21.6%	12.5%	51.0%	3.0%	27.6%	-14.6%	-15.2%	-3.7%	5.9%	-21.4%	-13.9%	-6.0%	-15.8%
ZILLAH P.D.	2008	12	188	69.1	5	1.8	0	3	1	1	183	67.3	2	52	121	8	61	10
Population: 2,770	2009	12	143	51.6	5	1.8	0	2	2	1	138	49.8	1	29	88	20	35	4
Percent of Change			-23.9%	-25.3%	0.0%	-1.8%		-33.3%	100.0%	0.0%	-24.6%	-26.0%	-50.0%	-44.2%	-27.3%	150.0%	-42.6%	-60.0%
COUNTY TOTAL	2008	156	13,119	55.6	780	3.3	19	100	244	417	12,339	52.3	124	3,057	7,344	1,814	2,899	573
Population: 238,400	2009	156	11,780	49.4	829	3.5	22	120	230	457	10,951	45.9	93	3,193	6,160	1,505	2,540	479
Percent of Change			-10.2%	-11.1%	6.3%	7.4%	15.8%	20.0%	-5.7%	9.6%	-11.2%	-12.2%	-25.0%	4.4%	-16.1%	-17.0%	-12.4%	-16.4%
OFFICE OF INSURANCE COMM.	2008	0	No Report From This Agency For This Period.....															
Population: 0	2009	12	0	---	0	---	0	0	0	0	0	---	0	0	0	0	0	0
Percent of Change																		
Washington State Totals (Adjusted to include murders from non-reporting agencies)																		
WASHINGTON STATE TOTAL	2008	2,883	264,159	40.7	21,203	3.26	* 191	2,578	6,206	12,228	242,956	37.4	1,565	51,385	162,276	27,730	45,363	8,980
Reporting Population: 6,659,685	2009	2,933	266,288	40.0	21,920	3.29	** 187	2,495	6,662	12,576	244,368	36.7	1,560	52,379	167,152	23,277	49,604	8,437
Percent of Change			0.8%	-1.7%	3.4%	0.8%	-2.1%	-3.2%	7.3%	2.8%	0.6%	-1.9%	-0.3%	1.9%	3.0%	-16.1%	9.3%	-6.0%

*Renton P.D., a non-reporting agency, had three murders in 2008.

**Yakama Nation Tribal P.D., a non-reporting agency, had one murder in 2009.

Populations are based on the Washington State Office of Financial Management "Official April 1, 2009 Population Estimates", except for university police, port police, tribal police, and non-reporting agencies which show zero populations.